

Transportation

Major Highways

State Highways: 17, 32, 47, 70, 155

U.S. Highways: 45, 51

Interstate Highways: None

Rail Service

None

Air Service

Local Service: Eagle River, Land O' Lakes

Classification: Transport

Scheduled Service: Rhinelander/Oneida County

Airline Service(s): Delta

Area Institutions

Technical College

Nicolet Technical College, Boulder Junction

Nearest University

University of Wisconsin – Marathon County

Educational Attainment

High School Diploma:

95.4%

College Degree:

29.2%

Source: ACS 2022

Healthcare

Primary Hospital:

Aspirus & Marshfield Clinic

County Contact

Vilas County Economic Development Corporation

555 Enterprise Way

Eagle River, WI 54521

Phone: (715) 337-0061

Website: www.vilascountyedc.org

Major Employers

Ace Hardware

Eagle River Memorial Hospital

Lake of the Torches

Local Net

Pukall Lumber Co., Inc.

Camp Manito-Wish YMCA Inc.

North States Utility Contractors

Peter Christensen Dental Clinic

Trig's

YMCA

Links

www.vilascountyedc.org

www.co.vilas.wi.us

www.locateinwisconsin.com

www.inwisconsin.com

www.ncwrpc.org



Regional Contact

NCWRPC

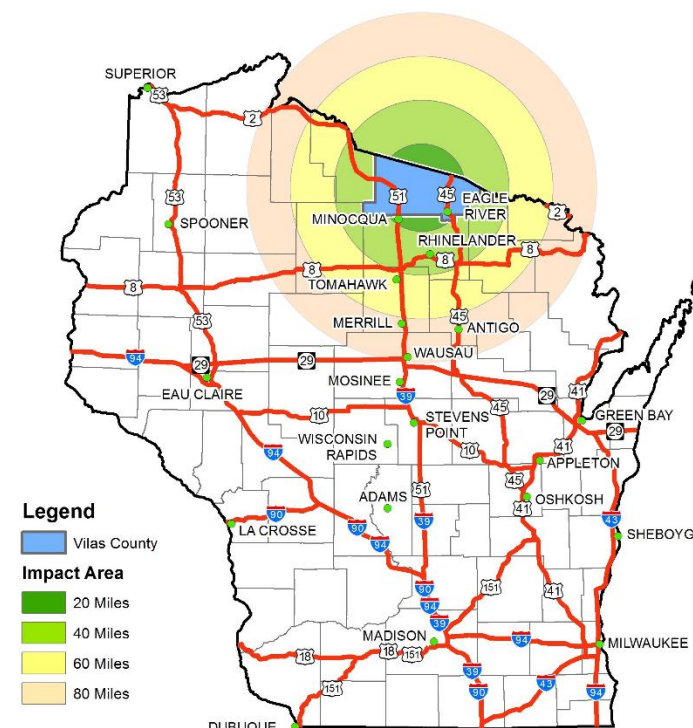
210 McClellan St., Suite 210

Wausau, WI 54403

Phone: (715) 849-5510

Website: www.ncwrpc.org

Vilas County, Wisconsin Profile



Demographics

Population:

	2010	2022
Vilas County	21,750	23,146
Wisconsin	5,686,986	5,882,128

Housing Units:

	2010	2022
Vilas County	23,922	24,661
Wisconsin	2,593,073	2,734,511

Median value of:

	Owner-Occ. Units	Gross Rent
Vilas County	\$255,700	\$766
Wisconsin	\$231,400	\$992

Data source: American Community Survey, 2010 & 2022

Economy

County Employment by Industry

Industry	Employees
Natural Resources	268
Construction	911
Manufacturing	590
Trade, Transport. & Utilities	2,056
Information	151
Financial Activities	718
Professional & Business Services	901
Education and Health	2,150
Leisure and Hospitality	1,417
Other Services	498
Public Administration	526

Employment Trends

	2010	2022
Vilas County Labor Force Participation Rate	58.1%	53.8%
Vilas County Employed	9,764	10,186
Vilas County Unemployed	951	488
Vilas County Unemployed Rate	10.5%	4.6%
Wisconsin Labor Force Participation Rate	69.0%	65.7%
Wisconsin Unemployment Rate	9.6%	3.4%

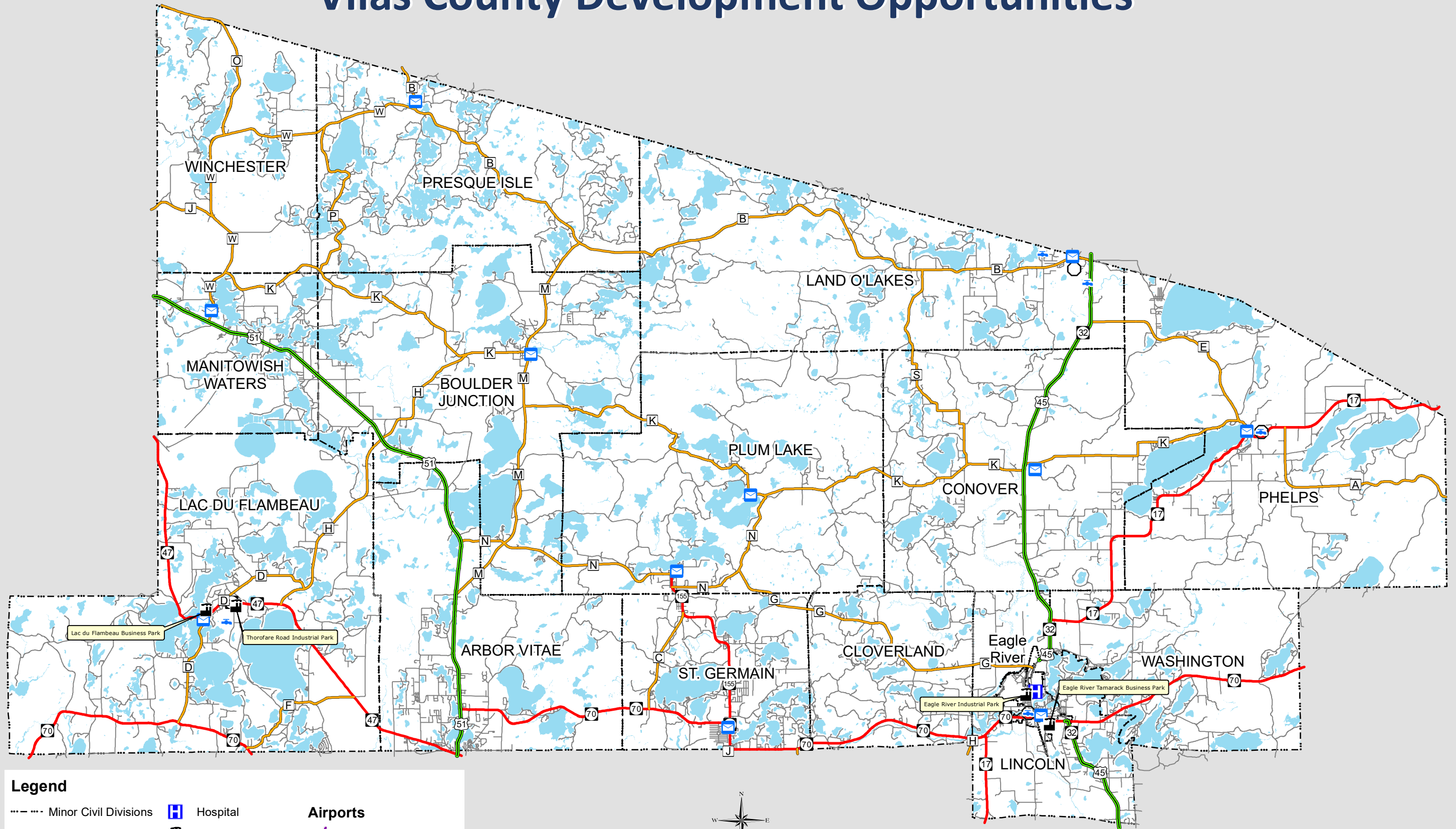
2022 Median Wages (Full time, year-round)

Occupation	County	State
Natural Resources	\$37,000	\$36,049
Construction	\$49,705	\$55,359
Manufacturing	\$52,273	\$53,998
Trade, Transport. & Utilities	\$42,989	\$45,890
Information	\$34,766	\$53,649
Financial Activities	\$45,913	\$59,818
Professional/Business Services	\$35,160	\$52,622
Education and Health	\$46,908	\$44,469
Leisure and Hospitality	\$23,060	\$16,332
Other Services	\$31,974	\$34,107
Public Administration	\$46,953	\$60,237

2022 Income (Per Capita)

Vilas County	\$40,136
State of Wisconsin	\$40,130
United States	\$41,804

Vilas County Development Opportunities



Legend

--- Minor Civil Divisions	Hospital	Airports
US Highways	Industrial Park	Transport / Corporate
State Highways	Post Office	Basic Utility - B
County Highways	Public Water Supply	Basic Utility - A
Local Roads	Waste Water Treatment Plant	General Utility
Water		

