

Transportation

Major Highways

State Highways: 17, 32, 47, 70, 155

U.S. Highways: 45, 51

Interstate Highways: None

Rail Service

None

Air Service

Local Service: Eagle River, Land O' Lakes

Classification: Transport

Scheduled Service: Rhinelander/Oneida County

Airline Service(s): Delta

Area Institutions

Technical College

Nicolet Technical College, Boulder Junction

Nearest University

University of Wisconsin – Marathon County

Educational Attainment

High School Diploma:

94.6%

College Degree:

27.7%

Source: ACS 2020

Healthcare

Primary Hospital:

Aspirus & Marshfield Clinic

County Contact

Vilas County Economic Development Corporation

555 Enterprise Way

Eagle River, WI 54521

Phone: (715) 337-0061

Website: www.vilascountyedc.org

Major Employers

Ace Hardware

Eagle River Memorial Hospital

Lake of the Torches

Local Net

Pukall Lumber Co., Inc.

Camp Manito-Wish YMCA Inc.

North States Utility Contractors

Peter Christensen Dental Clinic

Trig's

YMCA

Source: Wisconsin Workforce Development

Links

www.vilascountyedc.org

www.co.vilas.wi.us

www.locateinwisconsin.com

www.inwisconsin.com

www.ncwrpc.org



Regional Contact

NCWRPC

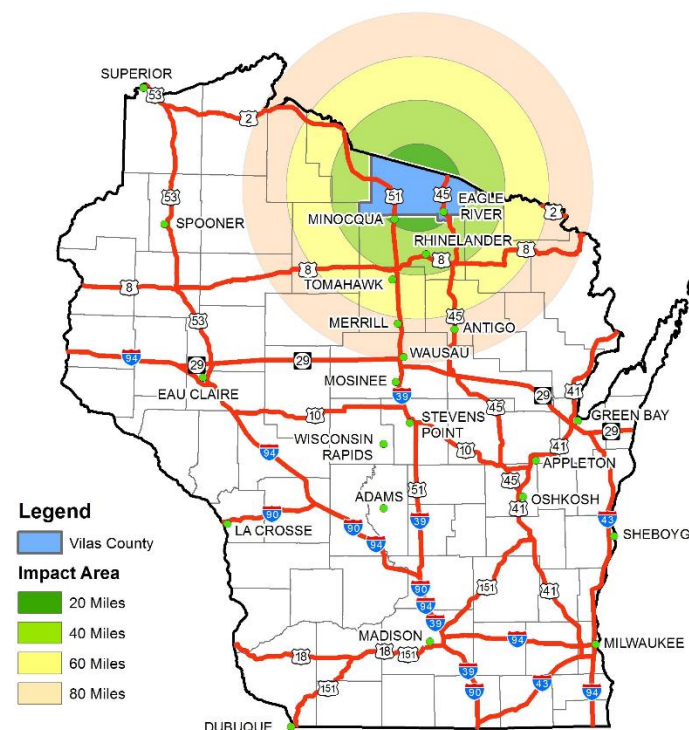
210 McClellan St., Suite 210

Wausau, WI 54403

Phone: (715) 849-5510

Website: www.ncwrpc.org

Vilas County, Wisconsin Profile



Demographics

Population:

	2010	2020
Vilas County	21,750	21,923
Wisconsin	5,686,986	5,893,718

Housing Units:

	2010	2020
Vilas County	23,922	26,150
Wisconsin	2,593,073	2,709,444

Median value of:

	Owner-Occ. Units	Gross Rent
Vilas County	\$212,700	\$685
Wisconsin	\$189,200	\$872

Data source: American Community Survey, 2010 & 2020

Economy

County Employment by Industry

Industry	Employees
Natural Resources	313
Construction	889
Manufacturing	521
Trade, Transport. & Utilities	1,761
Information	134
Financial Activities	593
Professional & Business Services	861
Education and Health	1,647
Leisure and Hospitality	1,773
Other Services	537
Public Administration	405

Employment Trends

	2010	2020
Vilas County Labor Force Participation Rate	58.1%	53.3%
Vilas County Employed	9,764	9,434
Vilas County Unemployed	951	564
Vilas County Unemployed Rate	10.5%	5.6%
Wisconsin Labor Force Participation Rate	69.0%	66.1%
Wisconsin Unemployment Rate	9.6%	3.6%

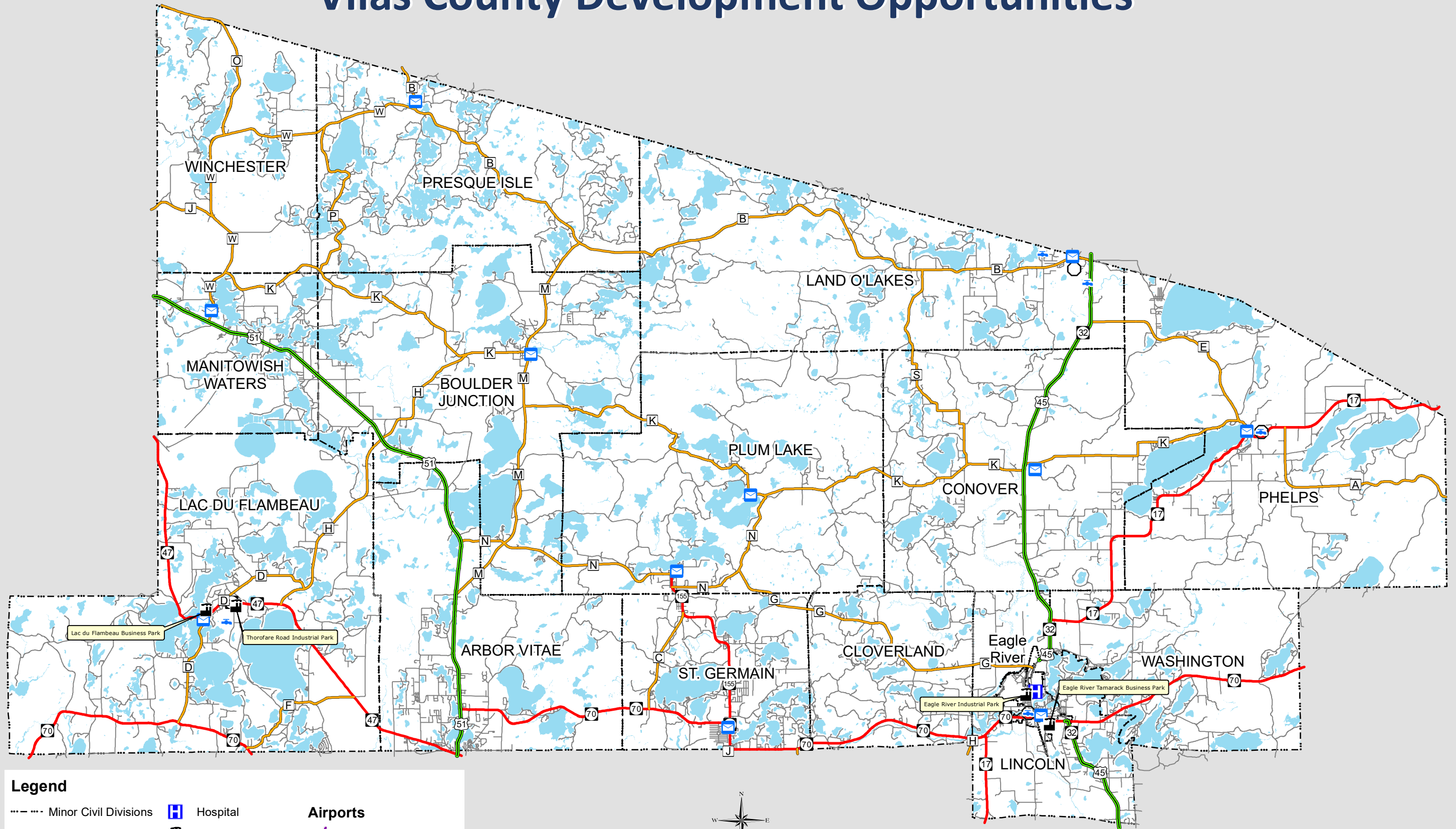
2020 Median Wages (Full time, year-round)

Occupation	County	State
Natural Resources	\$31,823	\$30,576
Construction	\$42,188	\$47,478
Manufacturing	\$46,406	\$46,494
Trade, Transport. & Utilities	\$28,965	\$33,624
Information	\$46,875	\$44,723
Financial Activities	\$40,092	\$49,827
Professional/Business Services	\$33,949	\$43,198
Education and Health	\$40,814	\$37,526
Leisure and Hospitality	\$21,010	\$14,144
Other Services	\$28,625	\$28,122
Public Administration	\$37,014	\$53,215

2020 Income (Per Capita)

Vilas County	\$34,548
State of Wisconsin	\$34,450
United States	\$35,384

Vilas County Development Opportunities



Legend

--- Minor Civil Divisions	Hospital	Airports
US Highways	Industrial Park	Transport / Corporate
State Highways	Post Office	Basic Utility - B
County Highways	Public Water Supply	Basic Utility - A
Local Roads	Waste Water Treatment Plant	General Utility
Water		

