

| Transportation                      |
|-------------------------------------|
| <b>Major Highways</b>               |
| State Highways: 17, 32, 47, 70, 155 |
| U.S. Highways: 45, 51               |
| Interstate Highways: None           |

| Rail Service |
|--------------|
| None         |

| Air Service                                  |
|--|
| Local Service: Eagle River, Land O’ Lakes    |
| Classification: Transport                    |
| Scheduled Service: Rhinelander/Oneida County |
| Airline Service(s): Delta                    |

| Area Institutions                                    |
|--|
| <b>Technical College</b>                             |
| Nicolet Technical College – Rhinelander (Oneida Co.) |
| <b>Nearest University</b>                            |
| University of Wisconsin – Stevens Point at Wausau    |

| Educational Attainment      |
|-----------------------------|
| <b>High School Diploma:</b> |
| 96.6%                       |
| <b>College Degree:</b>      |
| 30.9%                       |
| Source: ACS 2024            |

| Healthcare                  |
|-----------------------------|
| <b>Primary Hospital:</b>    |
| Aspirus & Marshfield Clinic |

| County Contact                                       |
|--|
| <b>Vilas County Economic Development Corporation</b> |
| 330 Court St.  |
| Eagle River, WI 54521                                |
| Phone: (715) 337-0061                                |
| Website: www.vilascountyedc.org                      |

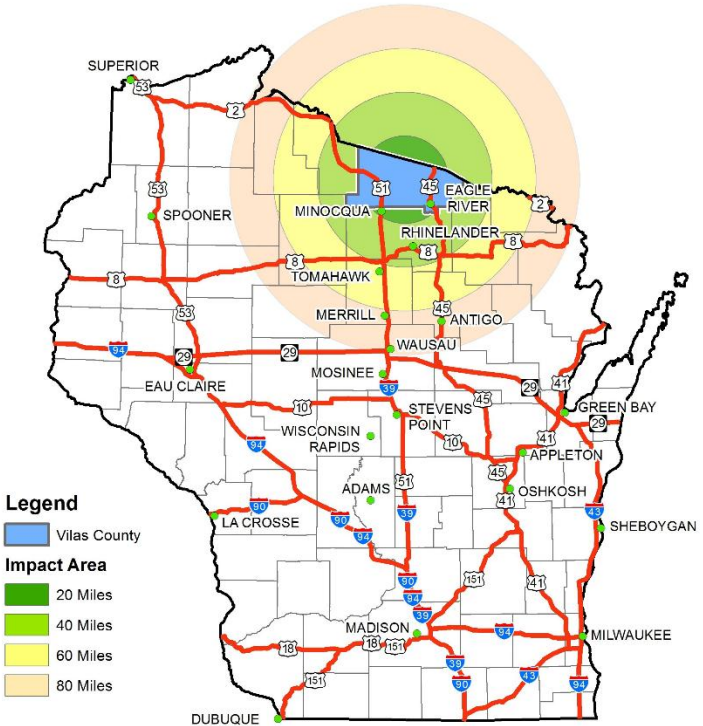
| Major Employers  |
|--|
| Northland Pines School District                        |
| Lake Of The Torches Resort Casino                      |
| Marshfield Clinic                                      |
| Lac Du Flambeau Band Of Lake Superior Chippewa Indians |
| Vilas County   |
| State of Wisconsin                                     |
| Lac Du Flambeau Tribe                                  |
| Ministry Health Care                                   |
| Lac Du Flambeau Public School                          |
| Aspirus  |

| Links                  |
|------------------------|
| www.vilascountyedc.org |
| www.vilascountywi.org  |
| wedc.org               |
| www.ncwrpc.org         |



| Regional Contact             |
|------------------------------|
| <b>NCWRPC</b>                |
| 210 McClellan St., Suite 210 |
| Wausau, WI 54403             |
| Phone: (715) 849-5510        |
| Website: www.ncwrpc.org      |

# Vilas County, Wisconsin Profile



| Demographics            |                  |            |
|-------------------------|------------------|------------|
| <b>Population:</b>      |                  |            |
|                         | 2010             | 2024       |
| Vilas County            | 21,750           | 23,647     |
| Wisconsin               | 5,686,986        | 5,914,872  |
| <b>Housing Units:</b>   |                  |            |
|                         | 2010             | 2024       |
| Vilas County            | 23,922           | 24,876     |
| Wisconsin               | 2,593,073        | 2,778,572  |
| <b>Median value of:</b> |                  |            |
|                         | Owner-Occ. Units | Gross Rent |
| Vilas County            | \$300,000        | \$847      |
| Wisconsin               | \$266,500        | \$1,087    |

Data source: American Community Survey, 2010 & 2024

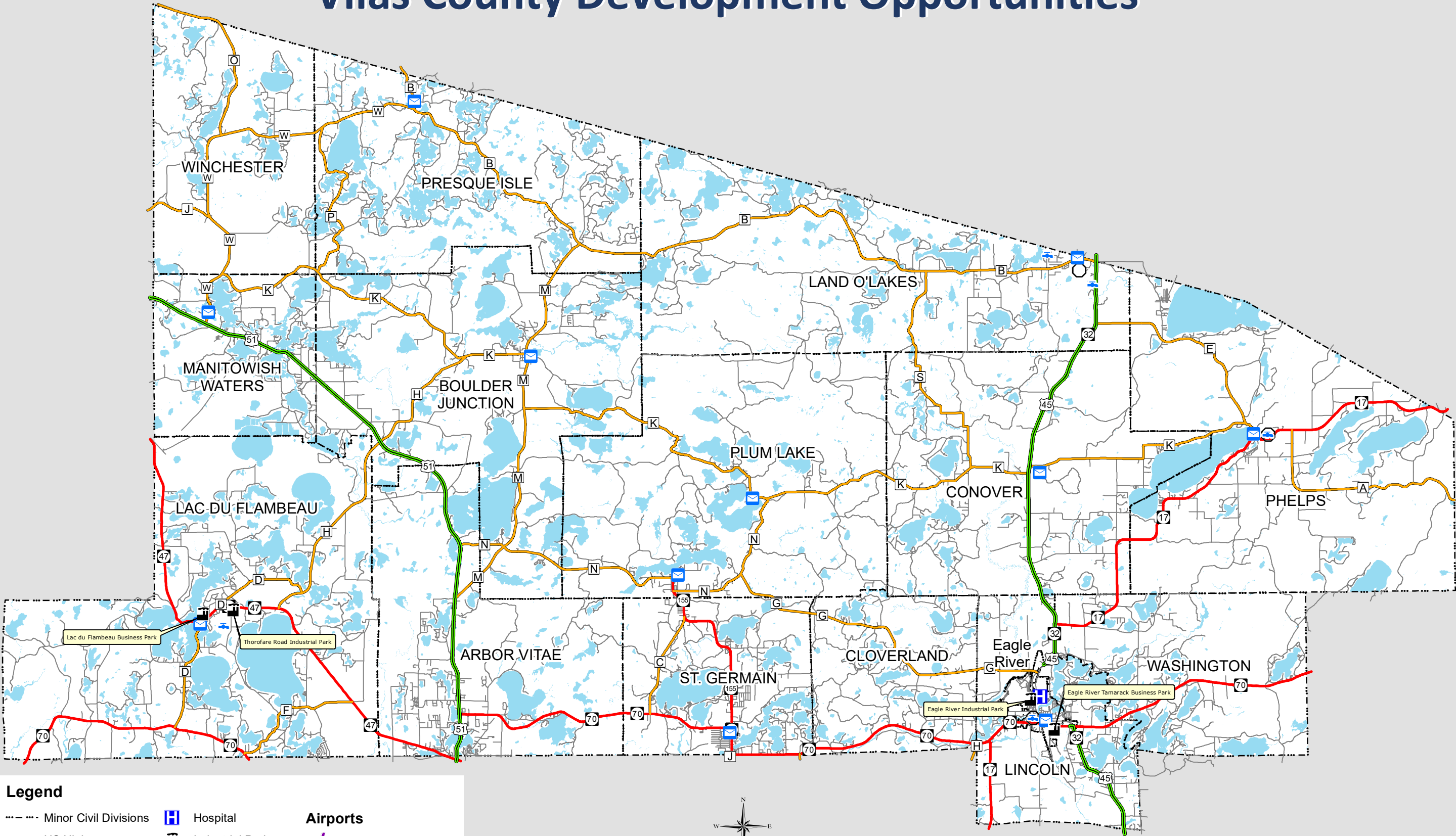
| Economy                              |           |
|--------------------------------------|-----------|
| <b>County Employment by Industry</b> |           |
| Industry                             | Employees |
| Natural Resources                    | 304       |
| Construction                         | 1,036     |
| Manufacturing                        | 699       |
| Trade, Transport. & Utilities        | 252       |
| Information                          | 1,402     |
| Financial Activities                 | 486       |
| Professional & Business Services     | 100       |
| Education and Health                 | 764       |
| Leisure and Hospitality              | 860       |
| Other Services                       | 2,314     |
| Public Administration                | 1,230     |

| Employment Trends                           |       |        |
|---|-------|--------|
|   | 2010  | 2024   |
| Vilas County Labor Force Participation Rate | 58.1% | 53.9%  |
| Vilas County Employed                       | 9,764 | 10,532 |
| Vilas County Unemployed                     | 951   | 435    |
| Vilas County Unemployed Rate                | 10.5% | 4.0%   |
| Wisconsin Labor Force Participation Rate    | 69.0% | 65.4%  |
| Wisconsin Unemployment Rate                 | 9.6%  | 3.1%   |

| 2024 Median Wages (Full time, year-round) |          |          |
|---|----------|----------|
| Occupation                                | County   | State    |
| Natural Resources                         | \$38,000 | \$40,529 |
| Construction                              | \$54,674 | \$60,104 |
| Manufacturing                             | \$61,736 | \$57,685 |
| Wholesale Trade                           | \$55,385 | \$60,334 |
| Retail Trade                              | \$30,606 | \$31,619 |
| Transport/Warehousing/Utilities           | \$48,000 | \$54,948 |
| Information                               | \$36,071 | \$56,639 |
| Financial services                        | \$50,174 | \$65,936 |
| Professional services                     | \$37,287 | \$59,234 |
| Education/Healthcare/Social Wrk.          | \$49,025 | \$48,487 |
| Leisure and Hospitality                   | \$27,899 | \$18,518 |
| Other Services                            | \$34,615 | \$36,890 |
| Public Administration                     | \$51,685 | \$64,633 |

| 2024 Income (Per Capita) |          |
|--------------------------|----------|
| Vilas County             | \$43,101 |
| State of Wisconsin       | \$43,373 |
| United States            | \$44,673 |

# Vilas County Development Opportunities



## Legend

- |                           |                             |                       |
|---------------------------|-----------------------------|-----------------------|
| --- Minor Civil Divisions | Hospital                    | <b>Airports</b>       |
| US Highways               | Industrial Park             | Transport / Corporate |
| State Highways            | Post Office                 | Basic Utility - B     |
| County Highways           | Public Water Supply         | Basic Utility - A     |
| Local Roads               | Waste Water Treatment Plant | General Utility       |
| Water                     |                             |                       |

