

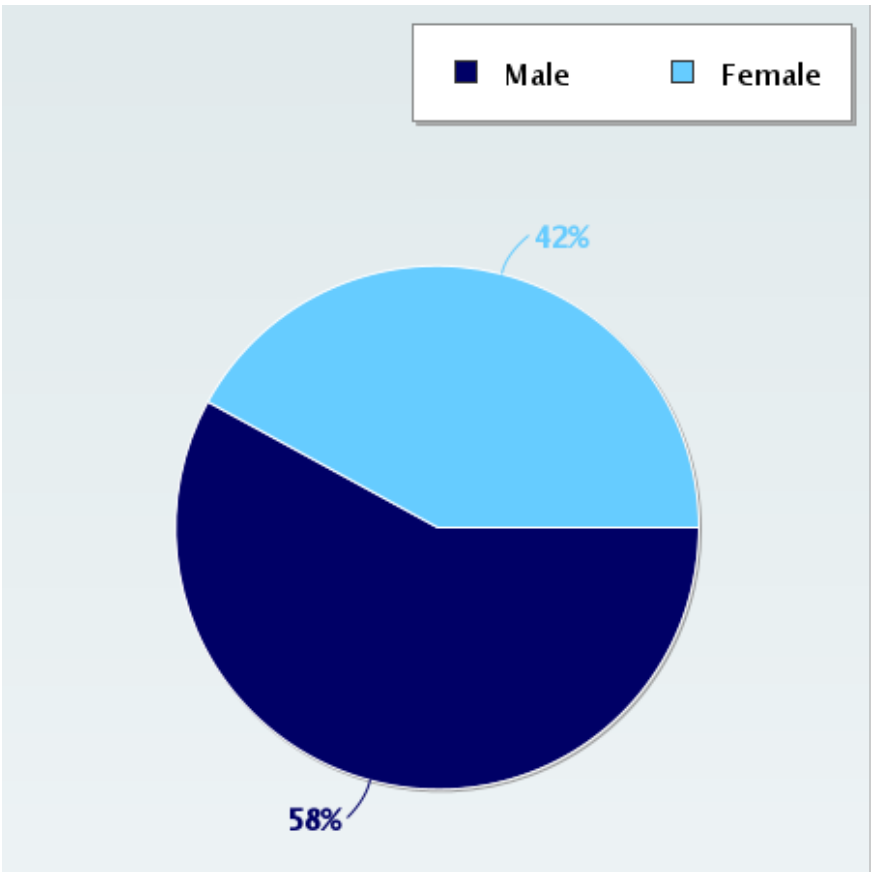
# Parent Survey Report: One School in One Data Collection Period

**School Name:** Crescent Elementary School  
**School Group:** Rhinelander  
**School Enrollment:** 376  
**% Range of Students Involved in SRTS:** Not Applicable  
**Number of Questionnaires Distributed:** 77

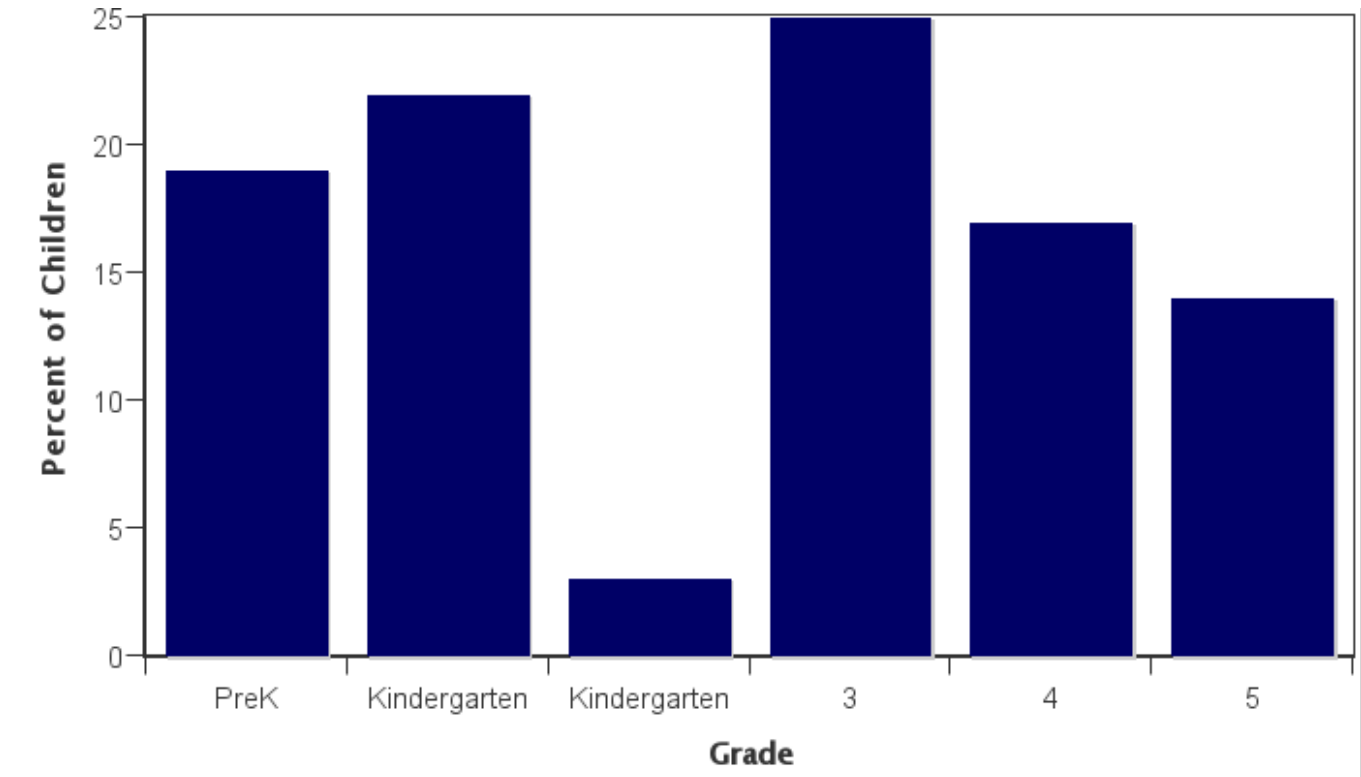
**Set ID:** 20204  
**Month and Year Collected:** October 2022  
**Date Report Generated:** 07/05/2023  
**Tags:**  
**Number of Questionnaires Analyzed for Report:** 77

This report contains information from parents about their children's trip to and from school. The report also reflects parents' perceptions regarding whether walking and bicycling to school is appropriate for their child. The data used in this report were collected using the Survey about Walking and Biking to School for Parents form from the National Center for Safe Routes to School.

## Sex of children for parents that provided information



## Grade levels of children represented in survey



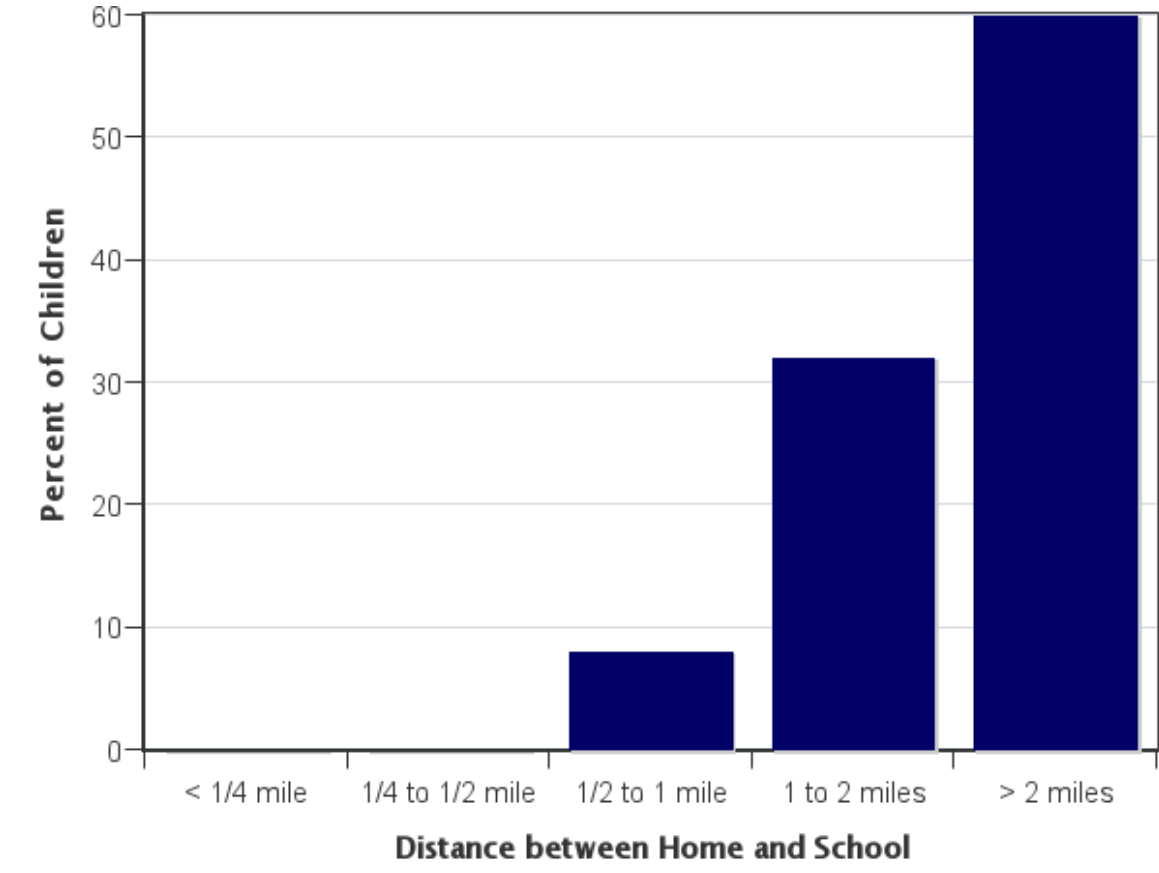
## Grade levels of children represented in survey

Grade in School	Responses per grade	
	Number	Percent
PreK	15	19%
Kindergarten	17	22%
1	2	3%
3	19	25%
4	13	17%
5	11	14%

No response: 0

Percentages may not total 100% due to rounding.

## Parent estimate of distance from child's home to school



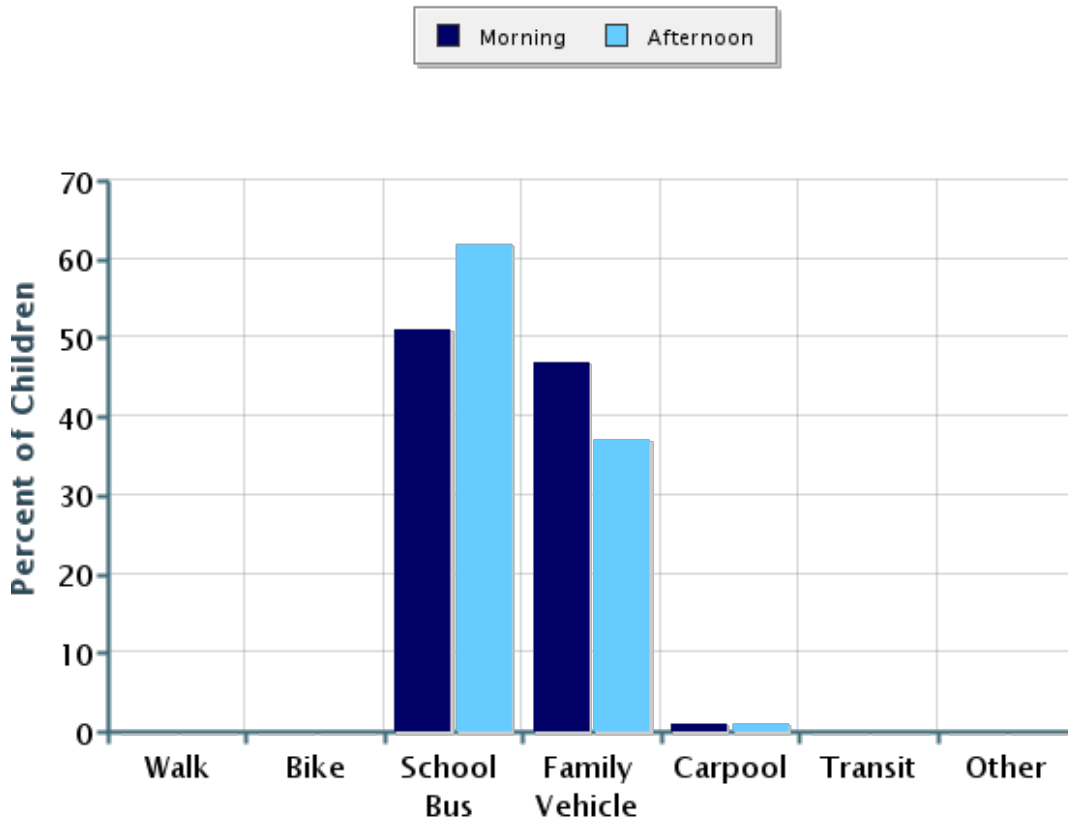
## Parent estimate of distance from child's home to school

Distance between home and school	Number of children	Percent
Less than 1/4 mile	0	0%
1/4 mile up to 1/2 mile	0	0%
1/2 mile up to 1 mile	6	8%
1 mile up to 2 miles	24	32%
More than 2 miles	45	60%

Don't know or No response: 2

Percentages may not total 100% due to rounding.

## Typical mode of arrival at and departure from school



## Typical mode of arrival at and departure from school

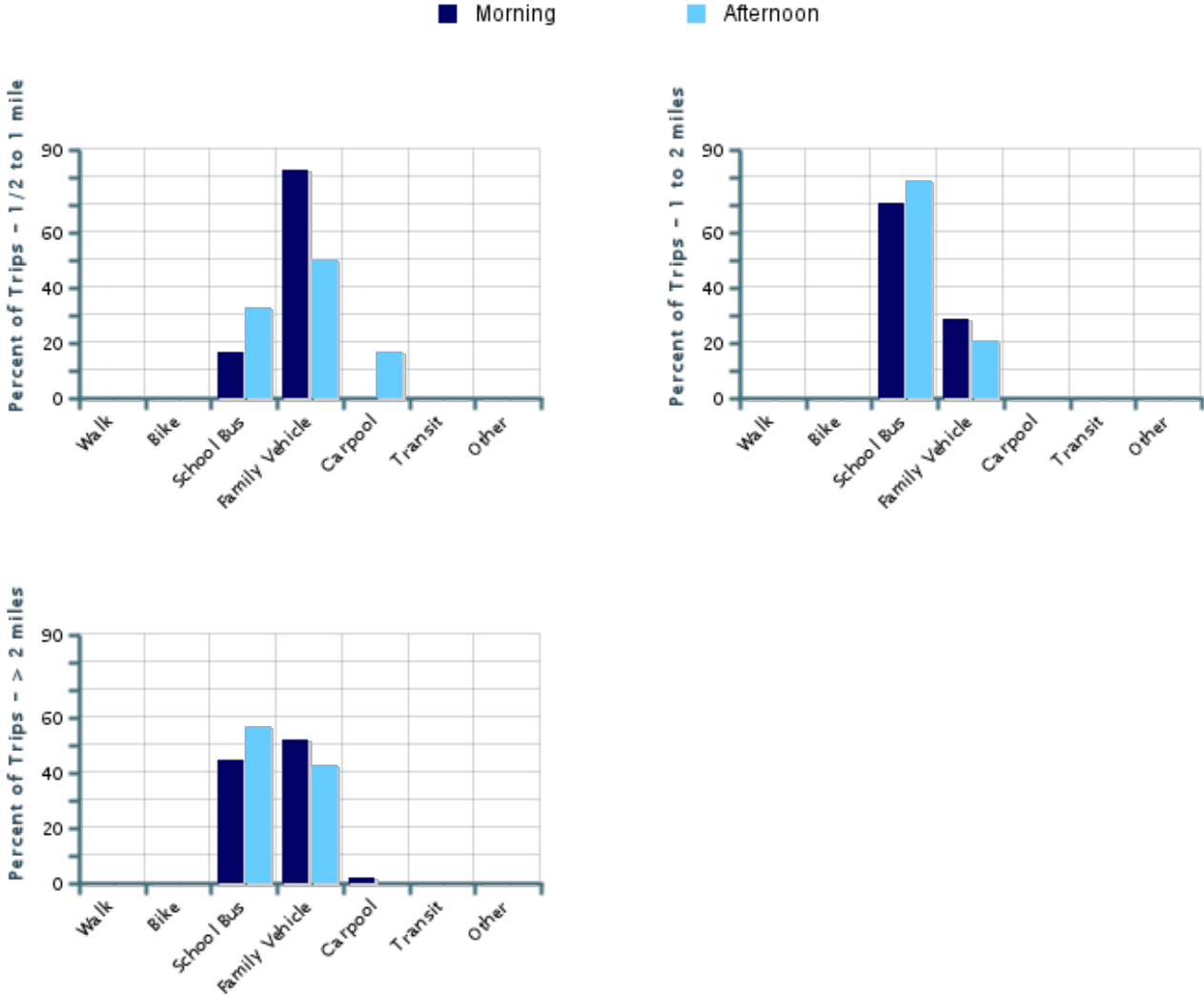
Time of Trip	Number of Trips	Walk	Bike	School Bus	Family Vehicle	Carpool	Transit	Other
Morning	76	0%	0%	51%	47%	1%	0%	0%
Afternoon	76	0%	0%	62%	37%	1%	0%	0%

No Response Morning: 1

No Response Afternoon: 1

Percentages may not total 100% due to rounding.

# Typical mode of school arrival and departure by distance child lives from school



# Typical mode of school arrival and departure by distance child lives from school

## School Arrival

Distance	Number within Distance	Walk	Bike	School Bus	Family Vehicle	Carpool	Transit	Other
Less than 1/4 mile	0	0%	0%	0%	0%	0%	0%	0%
1/4 mile up to 1/2 mile	0	0%	0%	0%	0%	0%	0%	0%
1/2 mile up to 1 mile	6	0%	0%	17%	83%	0%	0%	0%
1 mile up to 2 miles	24	0%	0%	71%	29%	0%	0%	0%
More than 2 miles	44	0%	0%	45%	52%	2%	0%	0%

Don't know or No response: 3

Percentages may not total 100% due to rounding.

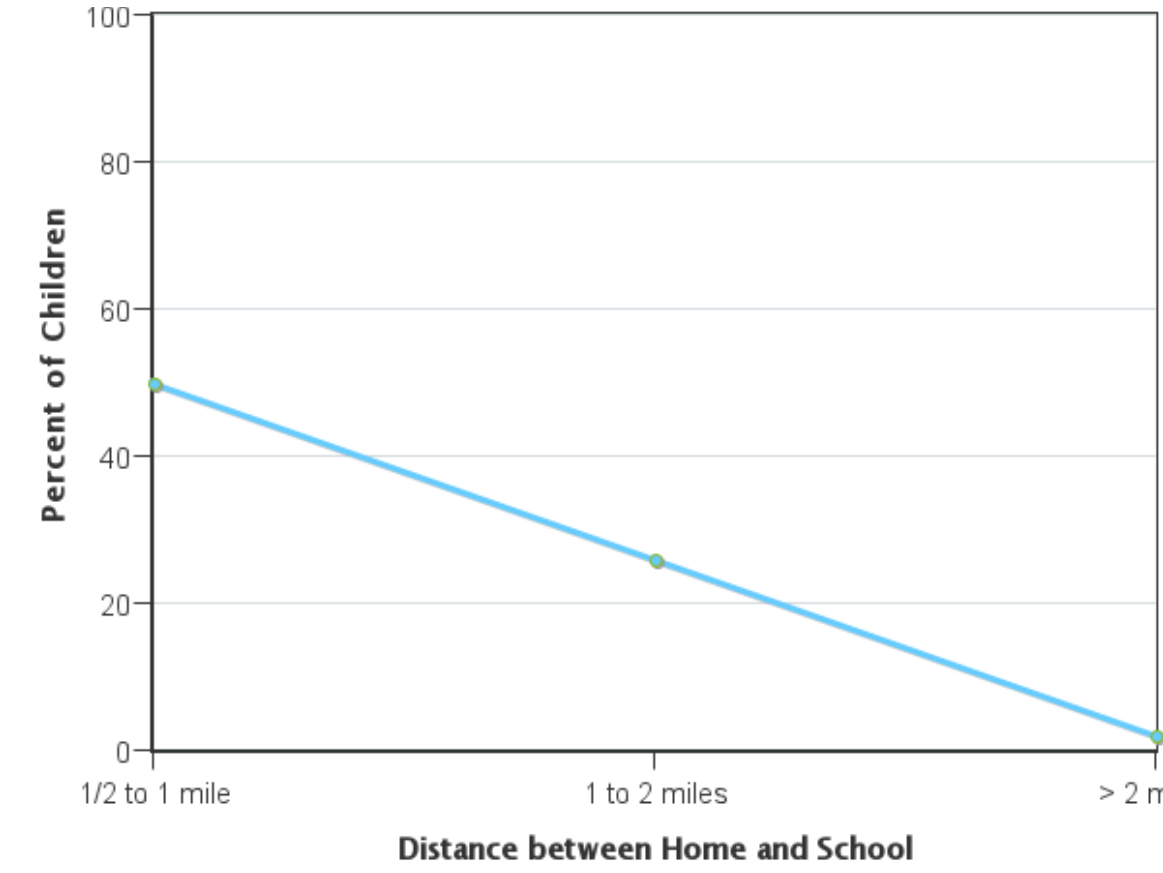
## School Departure

Distance	Number within Distance	Walk	Bike	School Bus	Family Vehicle	Carpool	Transit	Other
Less than 1/4 mile	0	0%	0%	0%	0%	0%	0%	0%
1/4 mile up to 1/2 mile	0	0%	0%	0%	0%	0%	0%	0%
1/2 mile up to 1 mile	6	0%	0%	33%	50%	17%	0%	0%
1 mile up to 2 miles	24	0%	0%	79%	21%	0%	0%	0%
More than 2 miles	44	0%	0%	57%	43%	0%	0%	0%

Don't know or No response: 3

Percentages may not total 100% due to rounding.

**Percent of children who have asked for permission to walk or bike to/from school by distance they live from school**



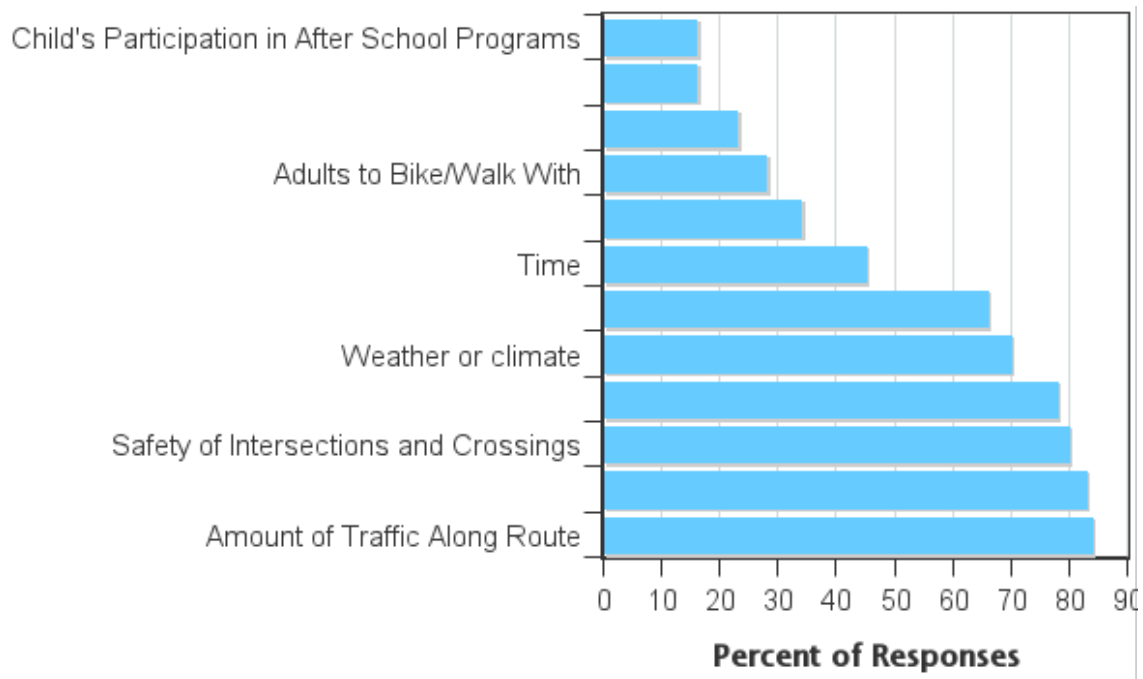
**Percent of children who have asked for permission to walk or bike to/from school by distance they live from school**

Asked Permission?	Number of Children	Less than 1/4 mile	1/4 mile up to 1/2 mile	1/2 mile up to 1 mile	1 mile up to 2 miles	More than 2 miles
Yes	10	0%	0%	50%	26%	2%
No	62	0%	0%	50%	74%	98%

Don't know or No response: 5

Percentages may not total 100% due to rounding.

## Issues reported to affect the decision to not allow a child to walk or bike to/from school by parents of children who do not walk or bike to/from school



## Issues reported to affect the decision to allow a child to walk or bike to/from school by parents of children who already walk or bike to/from school

Issue	Child does not walk/bike to school	Child walks/bikes to school
Amount of Traffic Along Route	84%	0
Speed of Traffic Along Route	83%	0
Safety of Intersections and Crossings	80%	0
Distance	78%	0
Weather or climate	70%	0
Sidewalks or Pathways	66%	0
Time	45%	0
Violence or Crime	34%	0
Adults to Bike/Walk With	28%	0
Crossing Guards	23%	0
Convenience of Driving	16%	0
Child's Participation in After School Programs	16%	0
<b>Number of Respondents per Category</b>	<b>64</b>	<b>0</b>



No response: 13

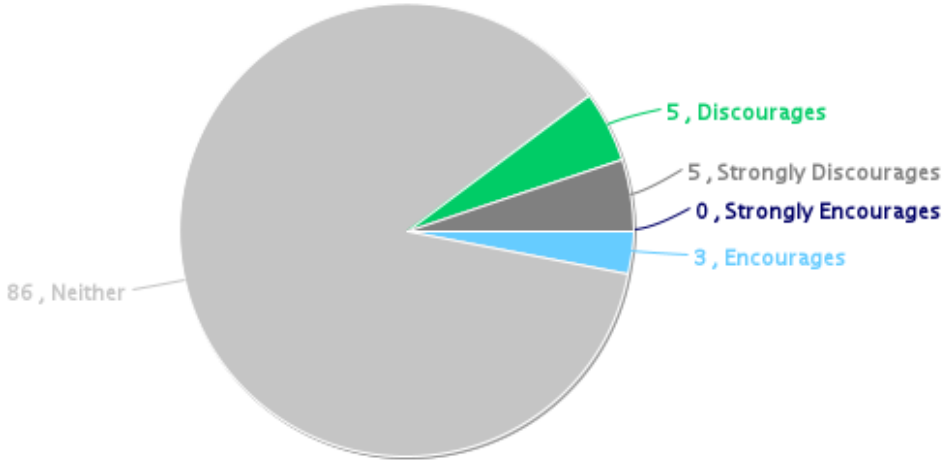
Note:

--Factors are listed from most to least influential for the 'Child does not walk/bike to school' group.

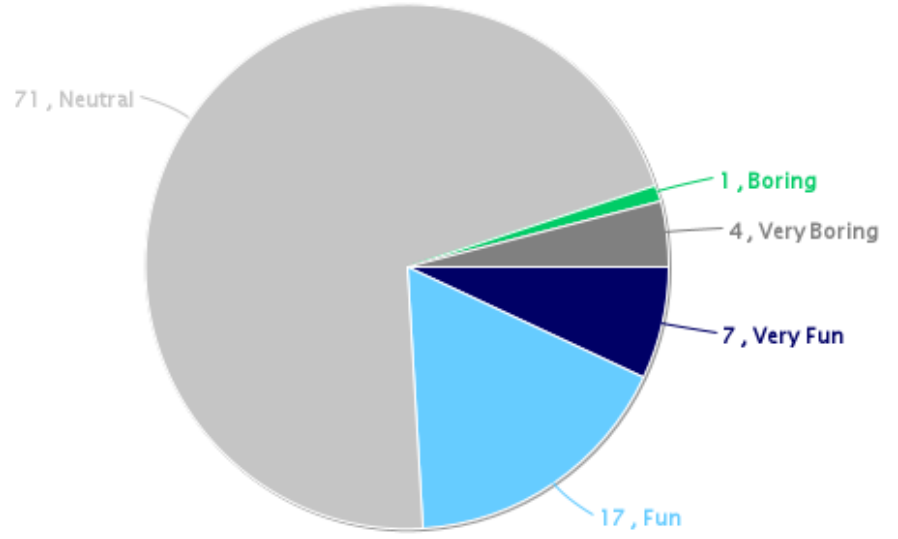
--Each column may sum to > 100% because respondent could select more than issue

--The calculation used to determine the percentage for each issue is based on the 'Number of Respondents per Category' within the respective columns (Child does not walk/bike to school and Child walks/bikes to school.) If comparing percentages between the two columns, please pay particular attention to each column's number of respondents because the two numbers can differ dramatically.

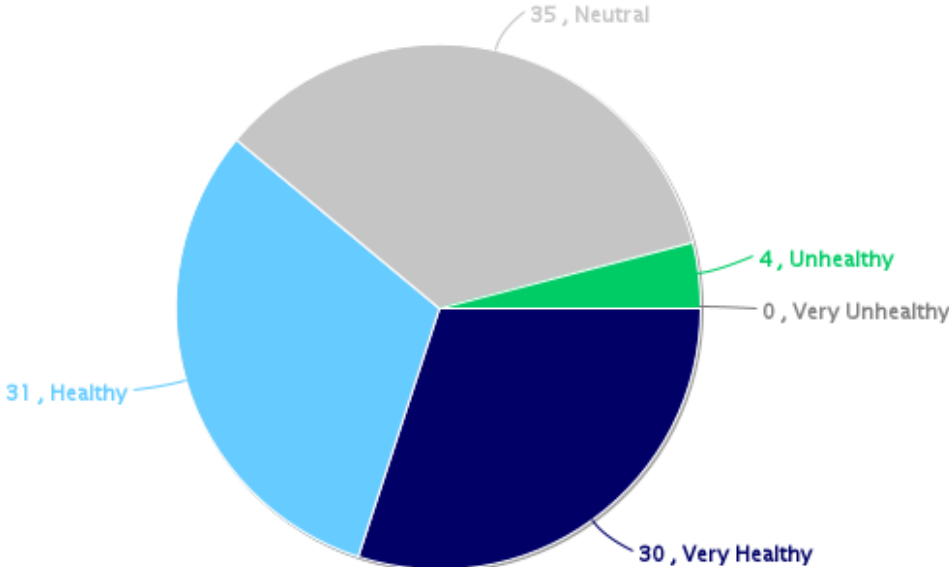
# Parents' opinions about how much their child's school encourages or discourages walking and biking to/from school



# Parents' opinions about how much fun walking and biking to/from school is for their child



# Parents' opinions about how healthy walking and biking to/from school is for their child



## Comments Section

SurveyID	Comment
1724057	There aren't any safe routes and major safety concerns crossing a highway.
1724059	I'd love a safe path for my kids!
1724063	There are no sidewalks or pathways on our route to school. There are too many blind curves/hills for me to feel safe allowing our kids to ride that route.
1724092	I support this but we live too far away.
1724099	We live too far for this to be applicable for our family, but I think it is an excellent thing for kids to bike or walk to school!
1724107	We would love a bike path to Crescent Elementary School. As of now there is not a safe and feasible route.
1724055	I would allow my child to ride bike to school if they did not have to cross and travel on the highway
1724075	I like the idea of having kids walk/bike to school. We just live too far away to partake.
1724129	Yes its ideal - but not safe in many ways. Not worth the risk, unfortunately.
1724065	We live too far outside city limits for child to walk or ride bike to school
1724087	We live too far out for it to be possible to walk or bike to school.
1724116	We live too far from the school to bike or walk.
1723949	Sidewalks would improve safety of all people walking!
1724071	My family lives too far from the school to make walking/biking there a reasonable option. It is not an option for families who do live close as there are no sidewalks or paths leading there and there are multiple highways that often need to be crossed.
1724069	I live to far for my son to think of biking or walking to school.
1724082	I wish the bus would go down our road at least half way as there is a large parking lot for the bus to turn around. This way my kids could get dropped off at home.
1724086	We live close to the TLP house so we would never be comfortable with it.
1724105	We live to far away to make this possible.
1724078	With the distance they want kids to walk. We have too many people that operate vehicles under the influence in our town there are to any roads for elementary kids to cross it's unsafe it is just safer to transport your children
1724079	This world is to unsafe for an adult to walk/bike alone, let alone a child!
1724101	We live too far to make this possible.
1724067	The rest of the questions are irrelevant because we live 8.1 miles from school and my other answer was that I would never let her. We live 12 minutes from school. this amount of time is excessive.