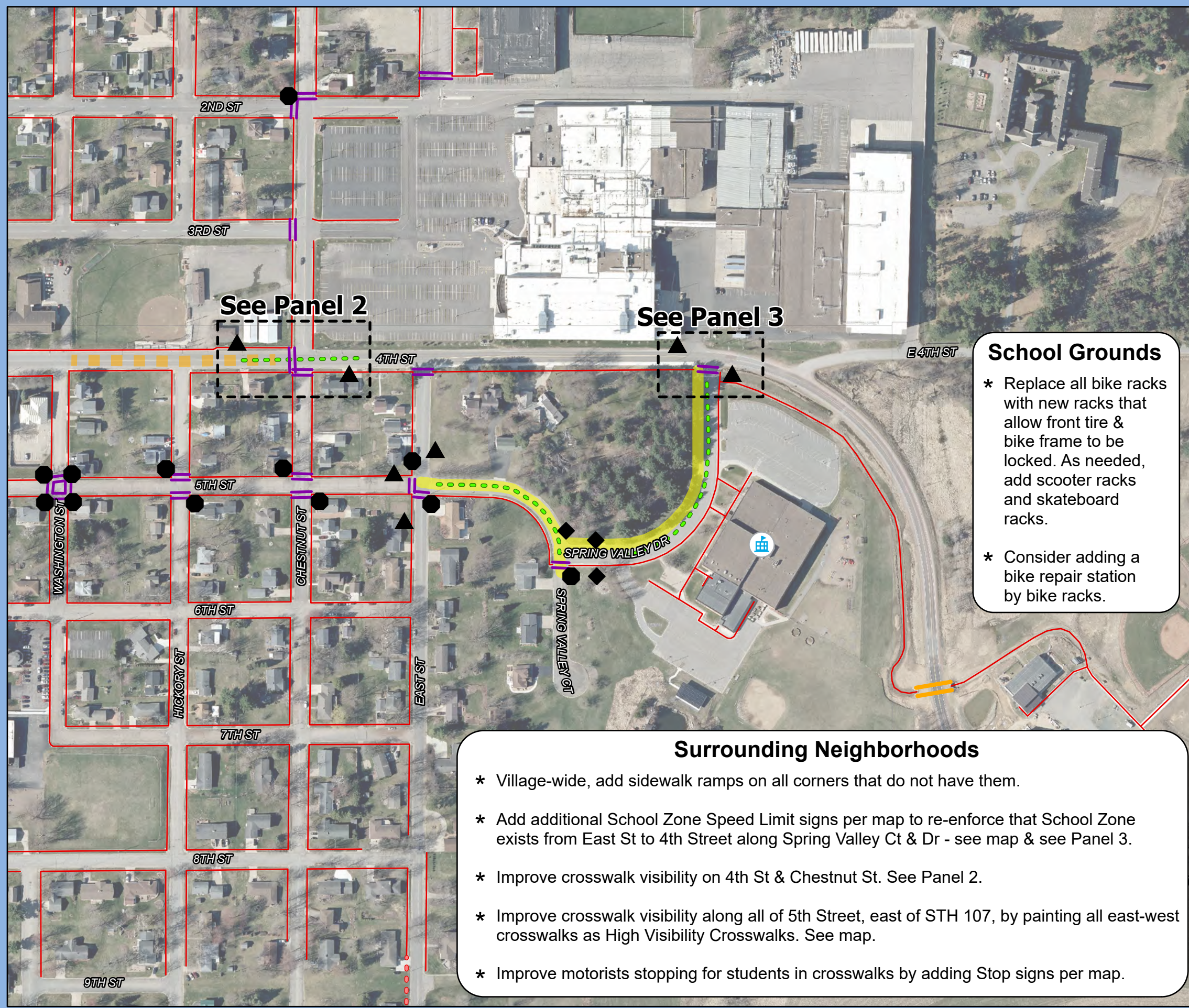


Map 5A DRAFT

Recommendations

Marathon Area Elementary

Marathon Safe Routes To School



School Grounds

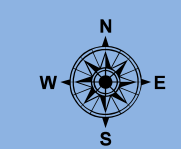
- * Replace all bike racks with new racks that allow front tire & bike frame to be locked. As needed, add scooter racks and skateboard racks.
- * Consider adding a bike repair station by bike racks.

Surrounding Neighborhoods

- * Village-wide, add sidewalk ramps on all corners that do not have them.
- * Add additional School Zone Speed Limit signs per map to re-enforce that School Zone exists from East St to 4th Street along Spring Valley Ct & Dr - see map & see Panel 3.
- * Improve crosswalk visibility on 4th St & Chestnut St. See Panel 2.
- * Improve crosswalk visibility along all of 5th Street, east of STH 107, by painting all east-west crosswalks as High Visibility Crosswalks. See map.
- * Improve motorists stopping for students in crosswalks by adding Stop signs per map.

Legend

- Marathon Elementary
- Sidewalks
- 15 MPH School Speed Limit
- Higher Fine School Zone
- Pedestrian Underpass
- Recommendations**
- Proposed Sidewalk
- Proposed 15 mph School Speed Limit
- Proposed High Visibility Crosswalk
- Proposed Stop Sign
- Additional School Speed sign
- Proposed End School Zone Sign



Source: WI DNR, WisDOT, NCWRPC, Marathon County
This map is neither a legally recorded map nor a survey and is not intended to be used as one. This drawing is a compilation of records, information and data used for reference purposes only. NCWRPC is not responsible for any inaccuracies herein contained.



Prepared By:
North Central Wisconsin Regional Planning Commission

210 McClellan St., Suite 210, Wausau, WI 54403
715-849-5510 - staff@ncwrpc.org - www.ncwrpc.org