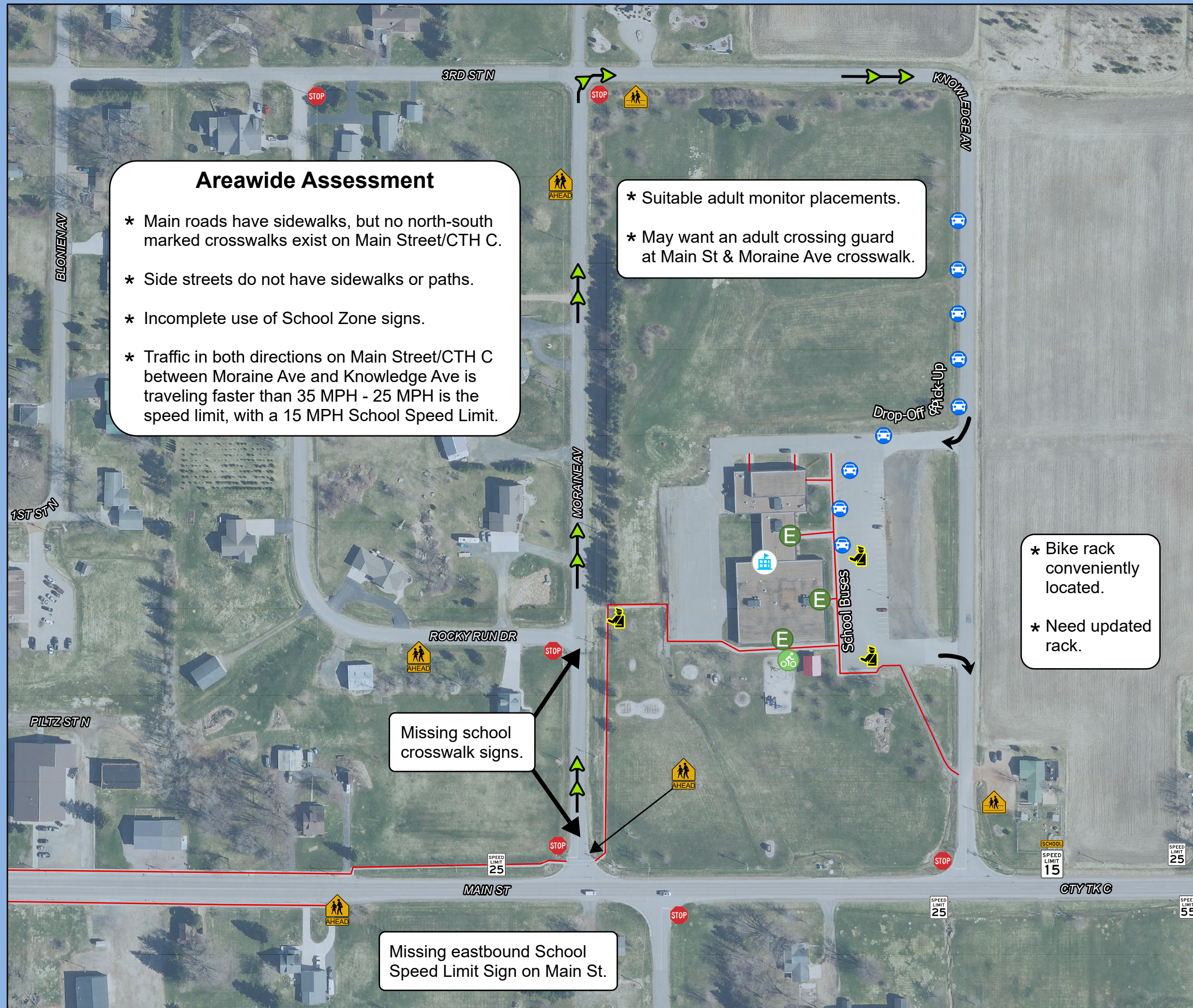


Site Assessment

THINK Academy

Wisconsin Rapids Safe Routes To School



Areawide Assessment

- * Main roads have sidewalks, but no north-south marked crosswalks exist on Main Street/CTH C.
- * Side streets do not have sidewalks or paths.
- * Incomplete use of School Zone signs.
- * Traffic in both directions on Main Street/CTH C between Moraine Ave and Knowledge Ave is traveling faster than 35 MPH - 25 MPH is the speed limit, with a 15 MPH School Speed Limit.

- * Suitable adult monitor placements.
- * May want an adult crossing guard at Main St & Moraine Ave crosswalk.

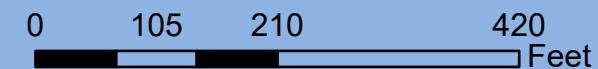
- * Bike rack conveniently located.
- * Need updated rack.

Missing school crosswalk signs.

Missing eastbound School Speed Limit Sign on Main St.

Legend

- THINK Academy
- School Entrance
- Bike Rack
- Adult Monitor
- Parked Family Vehicle
- School
- School Ahead
- Stop Sign
- 15 mph school zone
- Speed Limit
- Sidewalks
- 15 MPH School Speed Limit
- Drop-Off & Pick-Up Direction



Source: WI DNR, WisDOT, NCWRPC, Wood County
 This map is neither a legally recorded map nor a survey and is not intended to be used as one. This drawing is a compilation of records, information and data used for reference purposes only. NCWRPC is not responsible for any inaccuracies herein contained.



Prepared By:
North Central Wisconsin Regional Planning Commission

210 McClellan St., Suite 210, Wausau, WI 54403
 715-849-5510 - staff@ncwrpc.org - www.ncwrpc.org