

# Transportation

## Athens Elementary

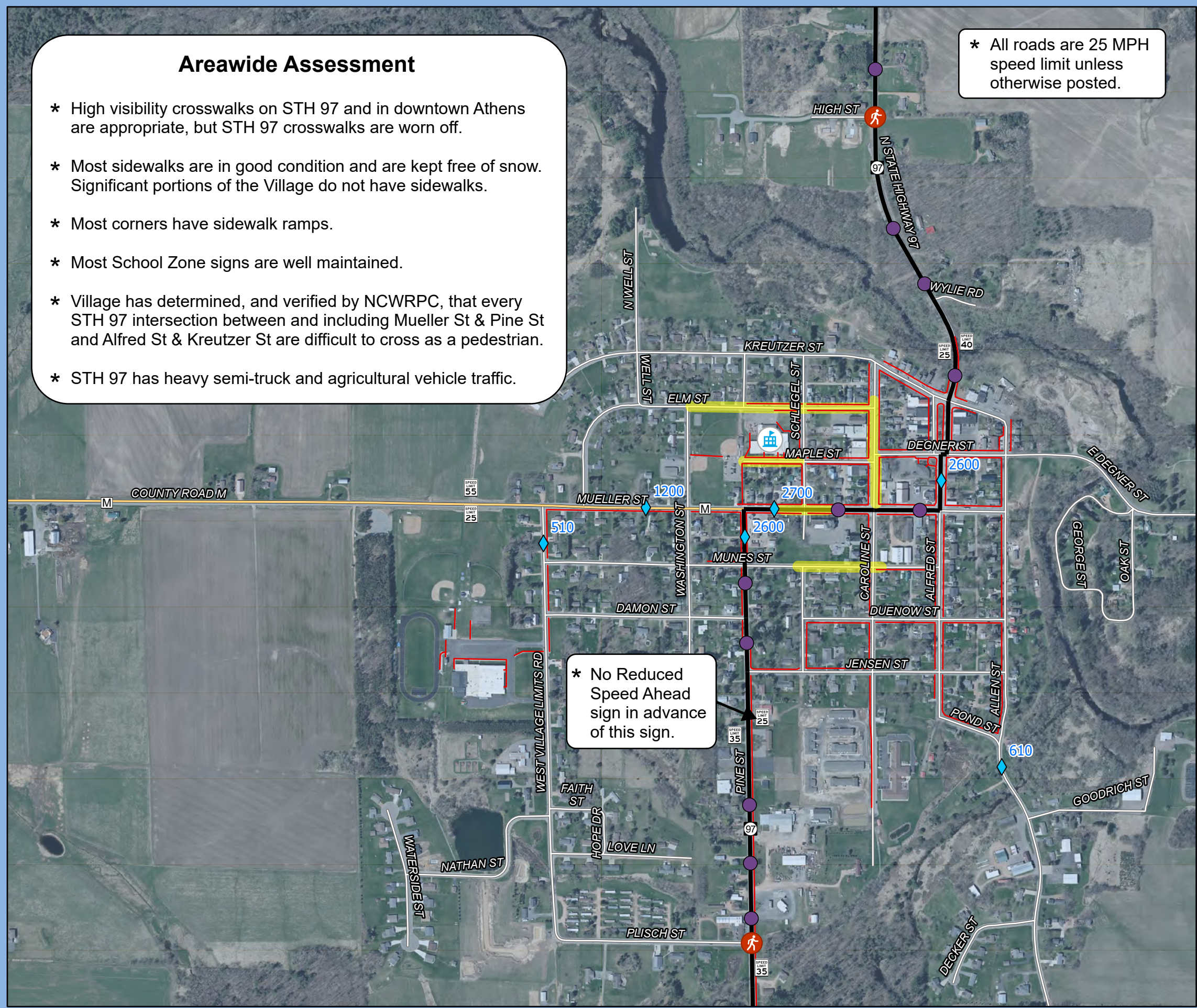
### Athens Safe Routes To School

### Areawide Assessment

- \* High visibility crosswalks on STH 97 and in downtown Athens are appropriate, but STH 97 crosswalks are worn off.
- \* Most sidewalks are in good condition and are kept free of snow. Significant portions of the Village do not have sidewalks.
- \* Most corners have sidewalk ramps.
- \* Most School Zone signs are well maintained.
- \* Village has determined, and verified by NCWRPC, that every STH 97 intersection between and including Mueller St & Pine St and Alfred St & Kreutzer St are difficult to cross as a pedestrian.
- \* STH 97 has heavy semi-truck and agricultural vehicle traffic.

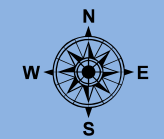
\* All roads are 25 MPH speed limit unless otherwise posted.

\* No Reduced Speed Ahead sign in advance of this sign.



### Legend

- Athens Elementary
- U.S. Highway
- State Highway
- Main Roads
- Local Roads
- 15 MPH School Speed Limit
- Sidewalks
- Speed Limit
- Major Truck Route
- Traffic Counts
- Crash Type (2010-2023)**
- Pedestrian



Source: WI DNR, WisDOT, NCWRPC, Marathon County  
 This map is neither a legally recorded map nor a survey and is not intended to be used as one. This drawing is a compilation of records, information and data used for reference purposes only. NCWRPC is not responsible for any inaccuracies herein contained.



Prepared By:  
**North Central Wisconsin Regional Planning Commission**

210 McClellan St., Suite 210, Wausau, WI 54403  
 715-849-5510 - staff@ncwrpc.org - www.ncwrpc.org