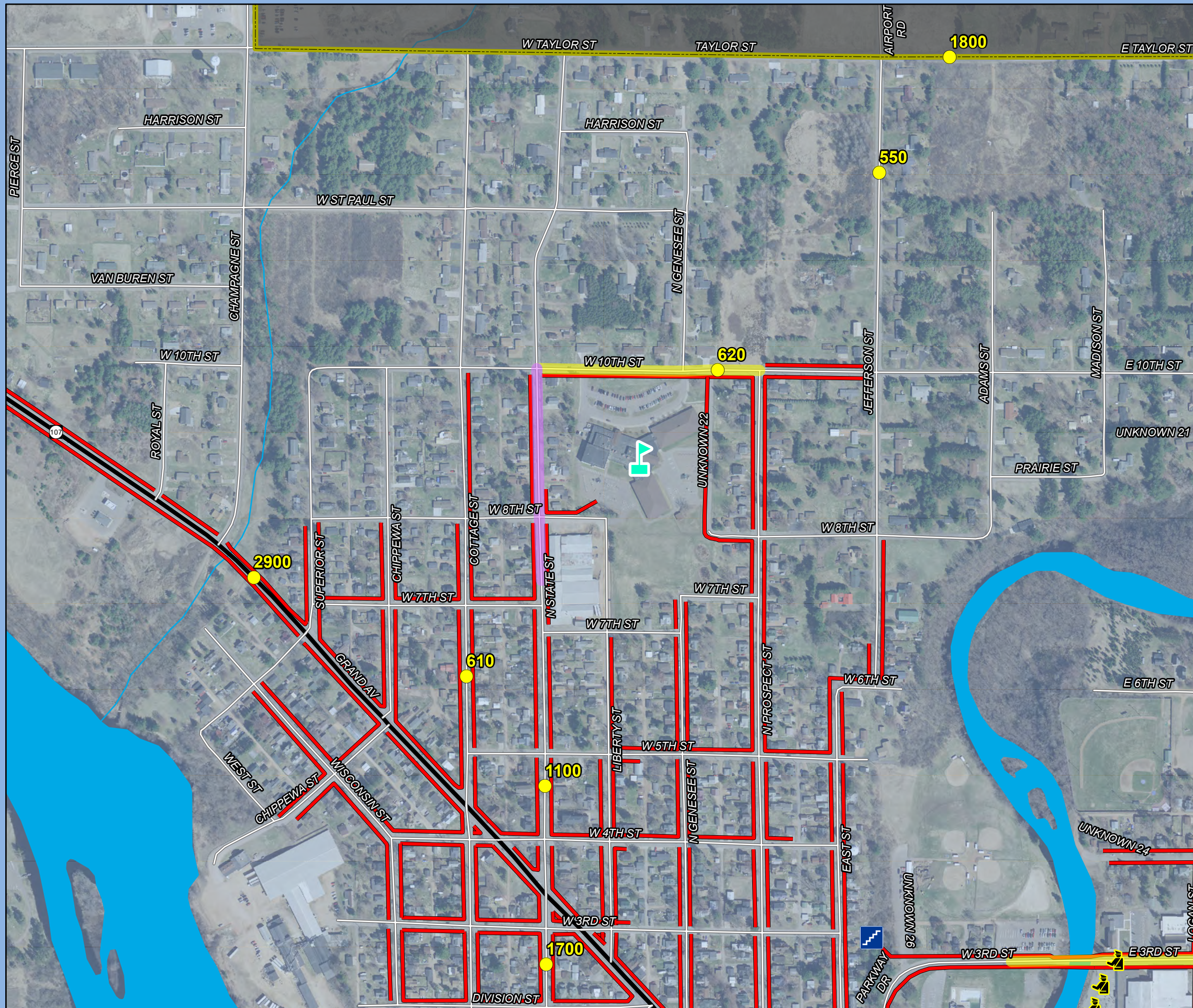


Map 4C Transportation

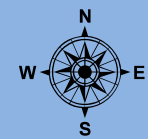
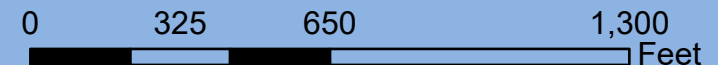
Kate Goodrich Elementary School

Merrill Safe Routes To School



Legend

- Kate Goodrich Elementary
- Traffic Count Location
- Crossing Guard
- Crash Type (2000-2018)**
- Bicycle
- 15 MPH School Speed Limit (Includes Higher Fine Zone)
- Higher Fine Zone
- Sidewalks
- Stairs
- State Highway
- Local Roads
- Minor Civil Division
- Water



Source: WI DNR, WisDOT, NCRPC, City of Merrill
 This map is neither a legally recorded map nor a survey and is not intended to be used as one. This drawing is a compilation of records, information and data used for reference purposes only. NCRPC is not responsible for any inaccuracies herein contained.



Prepared By:
**North Central
 Wisconsin Regional
 Planning Commission**

210 McClellan St., Suite 210, Wausau, WI 54403
 715-849-5510 - staff@ncwrpc.org - www.ncwrpc.org