

# Map 3D Site Assessment

## Washington Elementary School

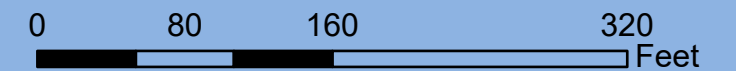
Merrill Safe Routes To School

### Areawide Assessment

- \* High-visibility crosswalks are well maintained and are in appropriate locations.
- \* Existing sidewalks are in good conditions and are kept free of snow.
- \* Sidewalk ramps exist on most corners.
- \* Most residential streets don't have sidewalks, but all collector streets have sidewalks. 6th St and Sales St are collector streets.

### Legend

- Washington Elementary
- Bike Rack
- Crossing Guard
- Safety Patrol
- School Entrance
- Stop Sign
- 15 MPH School Speed Limit (Includes Higher Fine Zone)
- Higher Fine Zone
- Sidewalks
- High Visibility Crosswalk
- Local Roads
- Water

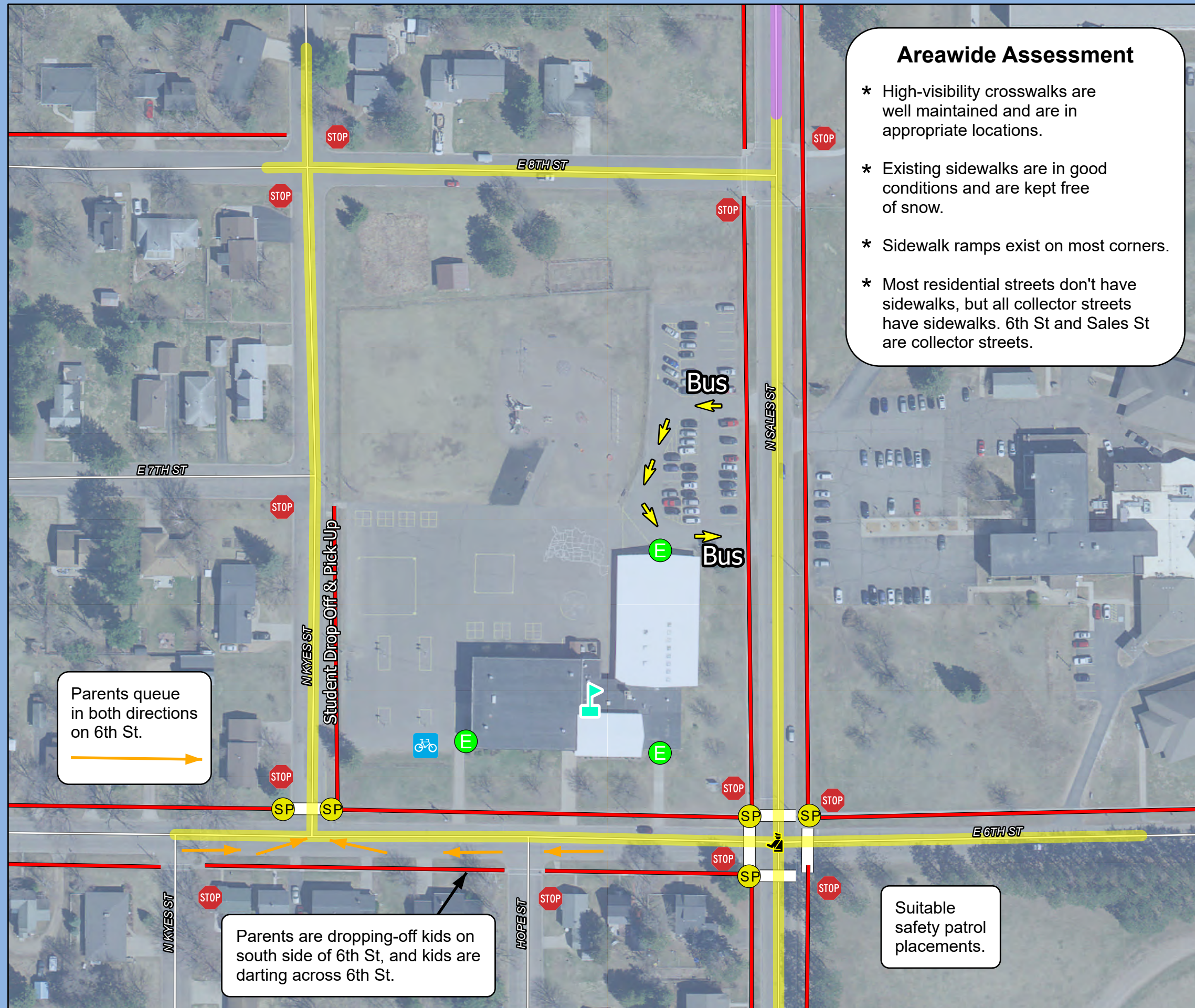


Source: WI DNR, NCWRPC, City of Merrill  
This map is neither a legally recorded map nor a survey and is not intended to be used as one. This drawing is a compilation of records, information and data used for reference purposes only. NCWRPC is not responsible for any inaccuracies herein contained.



Prepared By:  
**North Central  
Wisconsin Regional  
Planning Commission**

210 McClellan St., Suite 210, Wausau, WI 54403  
715-849-5510 - staff@ncwrpc.org - www.ncwrpc.org



Parents queue in both directions on 6th St.

Parents are dropping-off kids on south side of 6th St, and kids are darting across 6th St.

Suitable safety patrol placements.