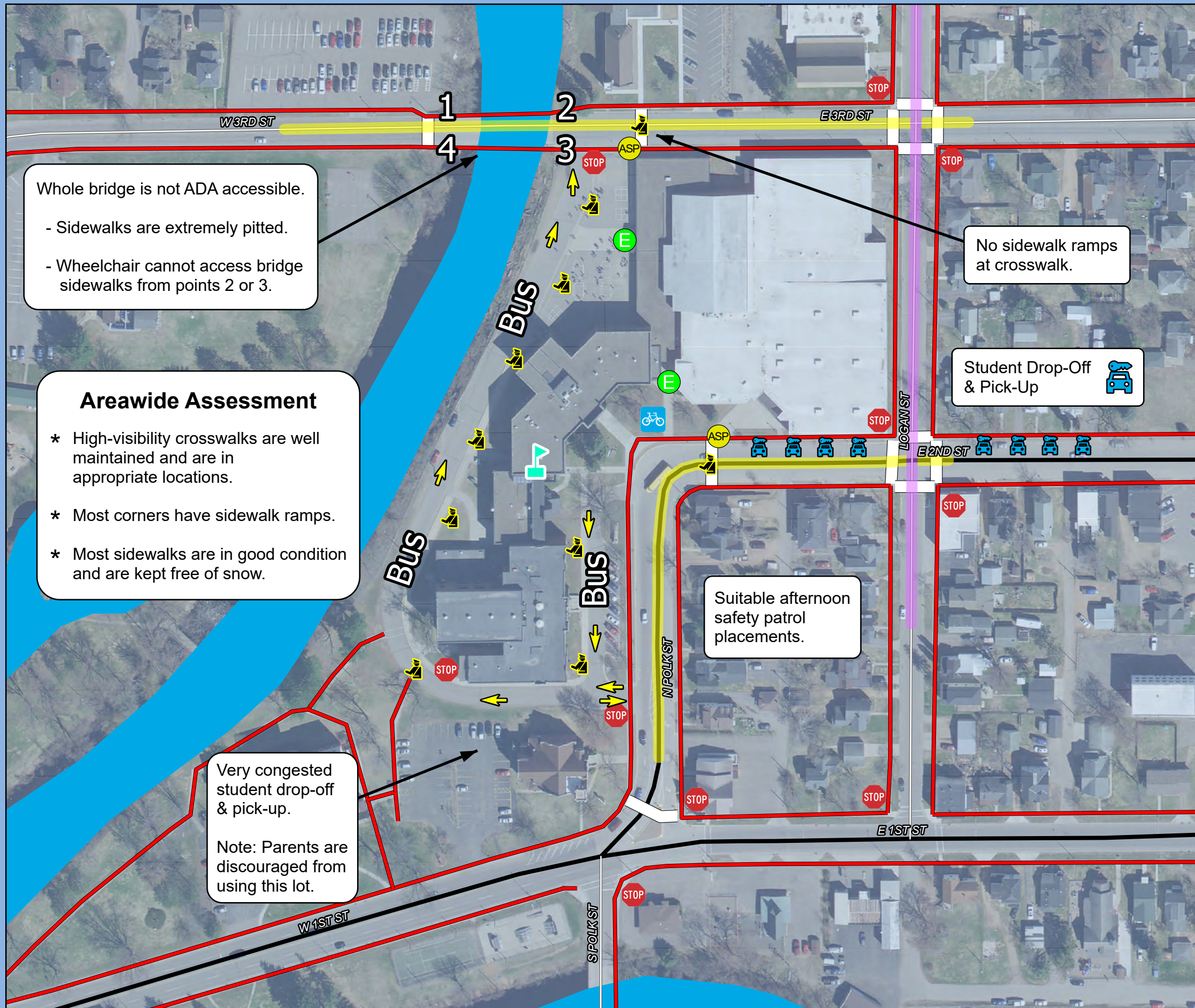


Map 3A Site Assessment

Prairie River Middle School

Merrill Safe Routes To School



Whole bridge is not ADA accessible.

- Sidewalks are extremely pitted.
- Wheelchair cannot access bridge sidewalks from points 2 or 3.

No sidewalk ramps at crosswalk.

Student Drop-Off & Pick-Up

Areawide Assessment

- * High-visibility crosswalks are well maintained and are in appropriate locations.
- * Most corners have sidewalk ramps.
- * Most sidewalks are in good condition and are kept free of snow.

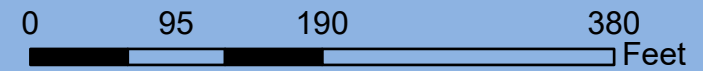
Suitable afternoon safety patrol placements.

Very congested student drop-off & pick-up.

Note: Parents are discouraged from using this lot.

Legend

- Prairie River Middle School
- Bike Rack
- Crossing Guard
- Afternoon Safety Patrol
- School Entrance
- Stop Sign
- 15 MPH School Speed Limit (Includes Higher Fine Zone)
- Higher Fine Zone
- Sidewalks
- High Visibility Crosswalk
- State Highway
- Local Roads
- Water



Source: WI DNR, NCWRPC, City of Merrill
 This map is neither a legally recorded map nor a survey and is not intended to be used as one. This drawing is a compilation of records, information and data used for reference purposes only. NCWRPC is not responsible for any inaccuracies herein contained.



Prepared By:
North Central Wisconsin Regional Planning Commission

210 McClellan St., Suite 210, Wausau, WI 54403
 715-849-5510 - staff@ncwrpc.org - www.ncwrpc.org