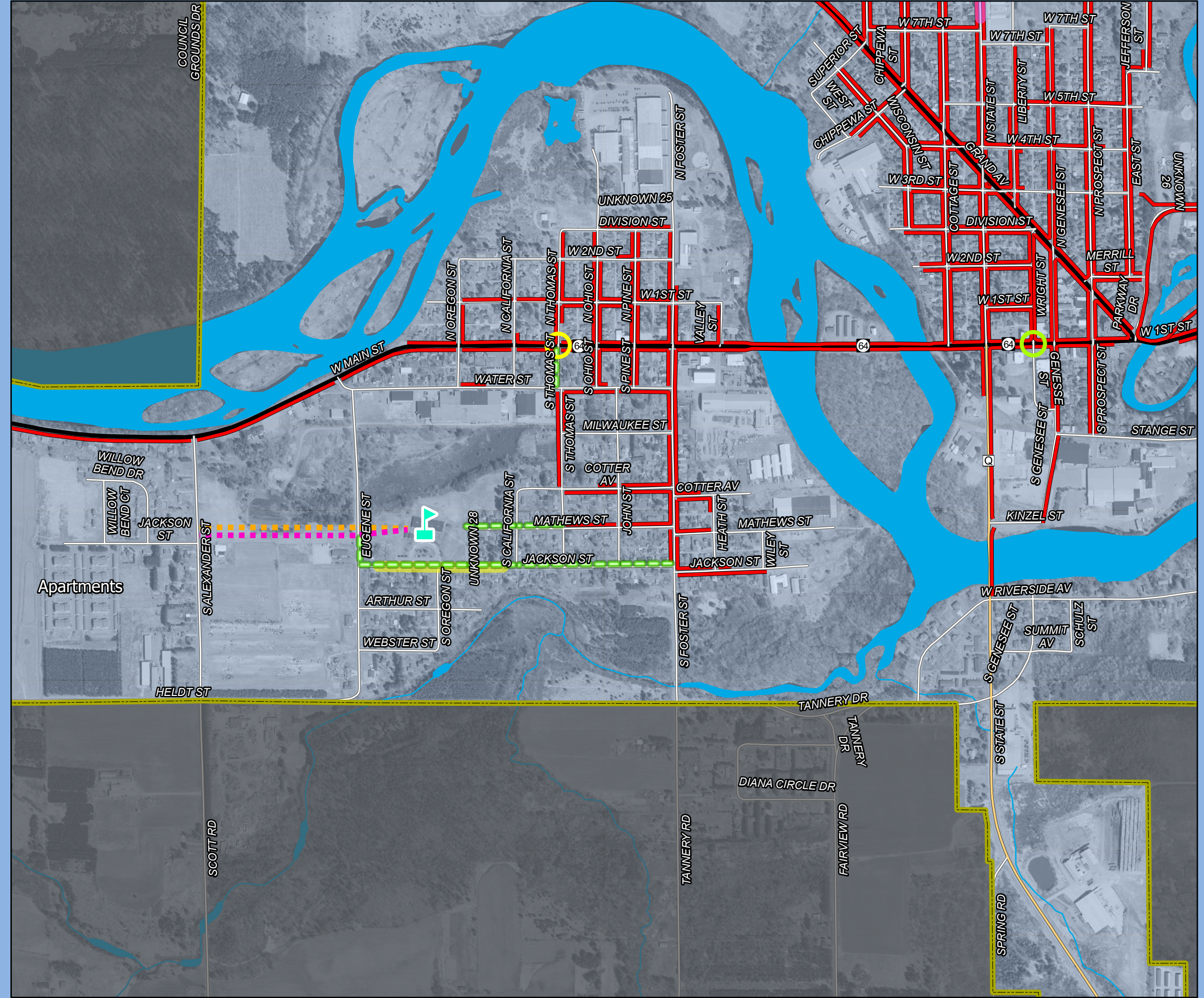


# Map 6B Recommendations

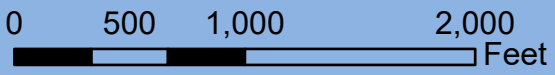
## Jefferson Elementary School

Merrill Safe Routes To School



### Legend

- Jefferson Elementary
- Existing Rapid Flash Crosswalk
- Proposed Rapid Flash Crosswalk
- Proposed Sidewalk
- Proposed Lighting
- Proposed 10-ft wide Path
- 15 MPH School Speed Limit (Includes Higher Fine Zone)
- Higher Fine Zone
- Sidewalks
- Minor Civil Division
- State Highway
- County Highway
- Local Roads
- Water



Source: WI DNR, WisDOT, NCRPC, City of Merrill  
 This map is neither a legally recorded map nor a survey and is not intended to be used as one. This drawing is a compilation of records, information and data used for reference purposes only. NCRPC is not responsible for any inaccuracies herein contained.



Prepared By:  
**North Central  
 Wisconsin Regional  
 Planning Commission**

210 McClellan St., Suite 210, Wausau, WI 54403  
 715-849-5510 - staff@ncwrpc.org - www.ncwrpc.org