



# Kate Goodrich Elementary School SRTS Action Plan

Merrill Area Public School District  
Safe Routes to School (SRTS) Program

2020

## School Demographics:

Enrollment: 363  
 Grades: K-5th grade  
 Start Time: 7:50 a.m.  
 End Time: 3:20 p.m.  
 Principal: Amy Stutzriem  
 505 W. 10th St.  
 Merrill, WI

SRTS Background Information 1

Survey Results and Existing Conditions 2

Maps: Site Assessment & Recommendations 4-5

Recommendations 6

## Safe Routes to School Background Information

The purpose of the SRTS program is to provide safe pedestrian and bicycle facilities that encourage healthier lifestyles. Programs can be established to educate students, parents, and the community on the benefits of walking and bicycling to school and provide tips to do so safely. Major SRTS goals are:

- To enable and encourage children, including those with disabilities, to walk and bike to school.
- To make bicycling and walking to school a safer and more appealing transportation alternative, thereby encouraging a healthy and active lifestyle from an early age.
- To facilitate the planning, development, and implementation of projects and activities that will improve safety and reduce traffic, fuel consumption, and air pollution in the vicinity of schools.

SRTS Planning efforts assess the facilities and conditions near school, examine how students are currently traveling to /from school, and identify safety concerns/issues raised by parents and the community. Infrastructure and non-infrastructure recommendations are then created and implemented, sometimes with grant funding assistance, by the SRTS Task Force and other community members. SRTS Plans focus on projects within two miles of an elementary or middle school (Kindergarten-8th grade) and address the 5 E's:

- ⇒ Engineering
- ⇒ Enforcement
- ⇒ Education
- ⇒ Encouragement
- ⇒ Evaluation



*The main goal of SRTS programs is to get children safely walking and biking to school.*

## Kate Goodrich Elementary School Background Information

Kate Goodrich Elementary School is located in the City of Merrill, and serves the north-central portion of the School District. The school was built in 1998 and we named after Merrill's first school teacher.

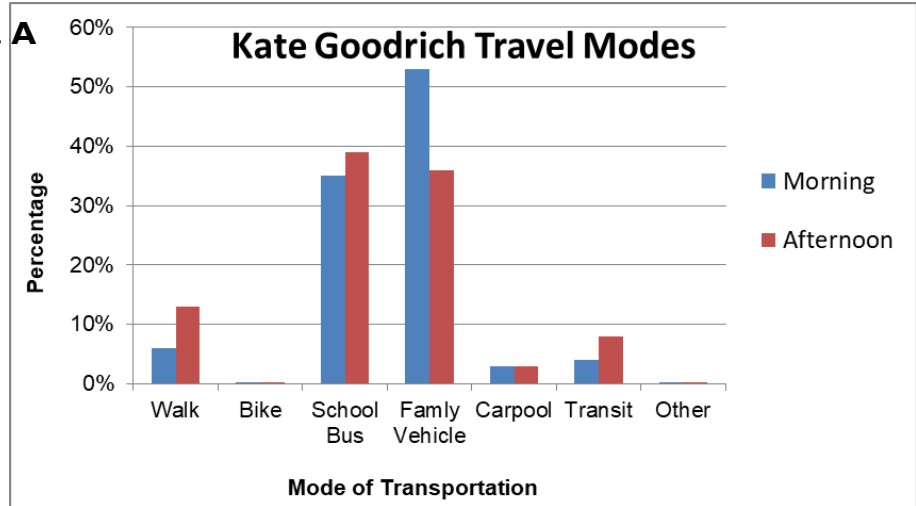
The majority of students travel to and from Kate Goodrich in the family vehicle (53 & 36%) or on the school bus (35 & 39%).

The next highest travel mode is by foot (6 & 13 %). The top three concerns of parents who do not allow their children to walk or bike to school are distance from school, the speed of traffic along route, and amount of traffic. Parent traffic in the morning backs up, down State St from 10th St.



The vast majority of students arrive and depart in the family vehicle (53 & 36%, Fig. A), followed by the school bus (35 & 39%) compared with walkers (6 & 13%), and almost no bikers (0.3%).

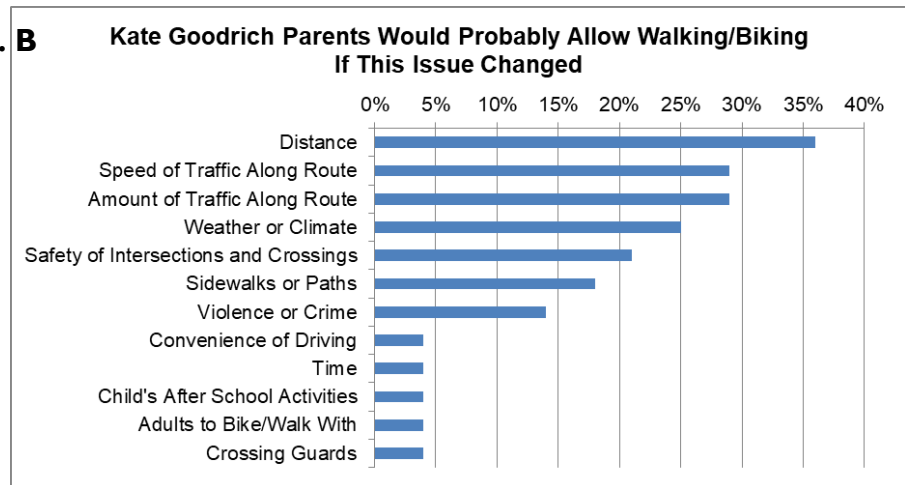
Fig. A



Student Tallies, October 2019

“Kate Goodrich Travel Modes” bar chart (Fig. A) shows that 17% more parents are driving their kids to school in the morning, but those kids get home by walking (7%), school bus and Merrill -Go-Round (4% each); with 2% unknown.

Fig. B

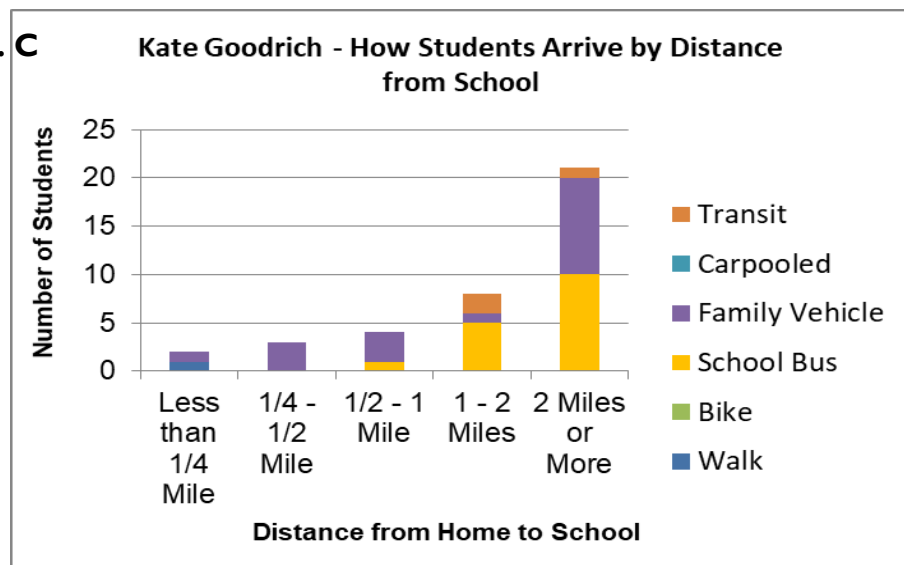


Parent Surveys, October 2019

“Distance” is the most commonly cited barrier by parents (Fig. B).

Fig. C shows 24% living within a mile of school and only one (2.6%) walker; therefore the potential to increase walking & biking is 21.4%.

Fig. C



Parent Surveys, October 2019

## Community/Task Force

### BACKGROUND

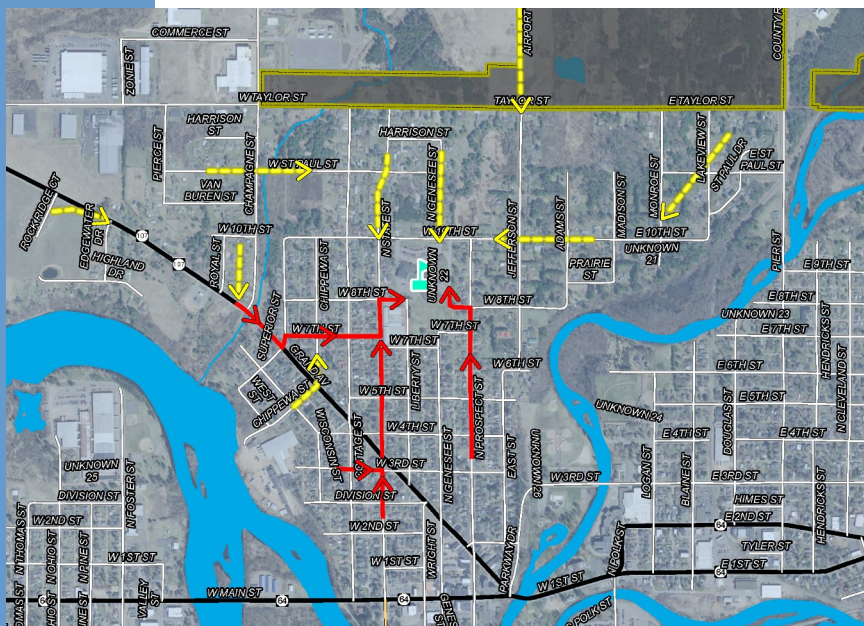
Many positive attributes make Merrill a great place to walk or bike for daily trips and for recreation. Historic downtown buildings and houses in some neighborhoods, surrounded by rivers and towering white pines provide scenic beauty to travel through. Distances are short to walk or bike. Many destinations are within a 3.5-mile, 20-minute, bicycling distance of most residents. Topography in Merrill is generally flat with gradual hills that are convenient to climb on a bike or to walk. All of these reasons make Merrill a good place to walk and bike.

Bicycling education in Merrill is multifaceted. The police department has been providing bicycle education in 3rd and 4th grades. The Merrill Optimist Club along with Merrill Park and Recreation Department and the Merrill Police Department provides bicycle safety training at the annual Children’s Festival, which targets toddlers up to 5th grade.

### TASK FORCE

The Merrill SRTS Tasks Force began meeting in the fall of 2019. An overarching issue was identified as the limiting factor to getting more walkers and bikers – parental convenience. Additional issues were reviewed at each school as basic air photo audits were conducted of each school.

School Route Maps: The City of Merrill and NCWRPC created school route maps (Maps 5A-5E) to show the major and minor feeder routes that children use to get to school. As part of the school route map development, recommendations were created.



Map 5C  
**School Routes**  
Kate Goodrich  
Elementary School

**Legend**

- Kate Goodrich Elementary
- Feeder Route
- Main Route
- State Highway
- County Highway
- Local Roads
- Minor Civil Division
- Water



# Map 6C Recommendations

**Kate Goodrich  
Elementary School**  
Merrill Safe Routes to School

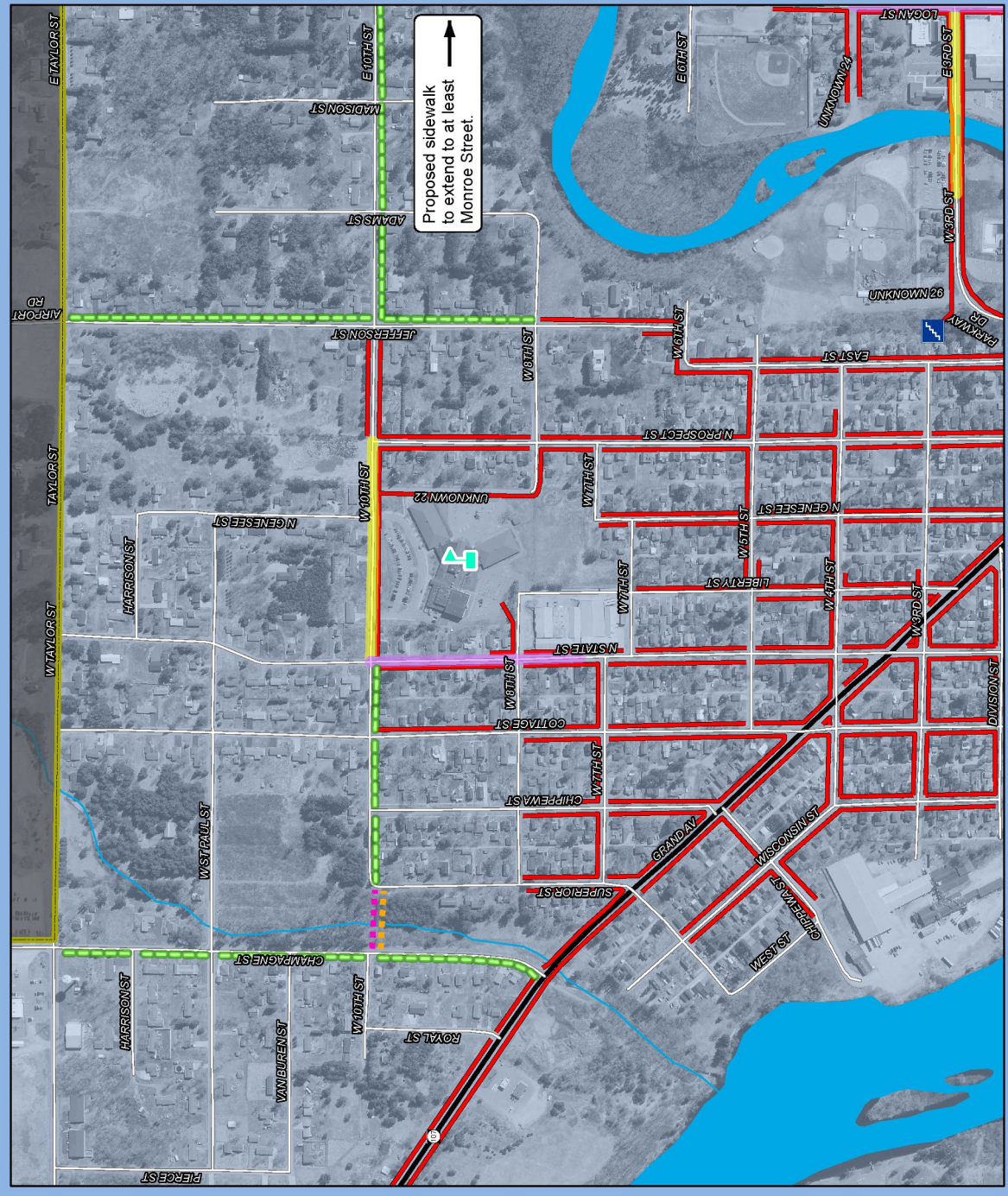
**Legend**

- Kate Goodrich Elementary
- Proposed Sidewalk
- Proposed Lighting
- Proposed 10-ft wide Path
- 15 MPH School Speed Limit (Includes Higher Fine Zone)
- Higher Fine Zone
- Sidewalks
- Stairs
- State Highway
- Local Roads
- Minor Civil Division
- Water



Source: WIDNR, WISDOT, NCVRPC, City of Merrill  
This map is neither a legally recorded map nor a survey and is not intended to be used as one. This drawing is for informational purposes only. NCVRPC is not responsible for any inaccuracies herein contained.

Prepared By:  
**North Central  
Wisconsin Regional  
Planning Commission**  
210 McClellan St., Suite 210, Wausau, WI 54403  
715-849-5510 - staff@ncwrpc.org - www.ncwrpc.org



**NORTH CENTRAL  
WISCONSIN  
REGIONAL  
PLANNING  
COMMISSION  
(NCWRPC)**

210 McClellan St., Suite 210  
Wausau, WI 54403  
715-849-5510  
www.ncwrpc.org

SRTS Action Plan prepared by  
North Central Wisconsin  
Regional Safe Routes to  
School Program. For addi-  
tional information please con-  
tact Fred Heider or Carrie  
Edmondson, Regional SRTS  
Coordinators at 715-849-  
5510 or visit  
www.ncwrpc.org.



## RECOMMENDATIONS for Kate Goodrich Elementary

ACTIVITY	LOCATION	FUNDING	LEAD AGENCY (BOLD)	TIME FRAME
<b>Engineering</b>				
Create 10-ft wide path with lighting in 10th Street right-of-way.	Due west of Kate Goodrich. See Map 6C.	WisDOT (Up to 80%), local taxes	<b>City</b>	Medium term (TAP application every other year)
Add sidewalks on at least one side of several streets.	See Map 6C.	WisDOT (Up to 80%), local taxes	<b>City</b>	Medium term (TAP application every other year)
Continue maintaining school zone signs, and painted crosswalks.	Existing locations.	Local taxes	<b>City</b>	Ongoing
Replace all bike racks. See Att. C guidance.	South side of school.	Local taxes	<b>School Dist.</b>	Short term
<b>Education</b>				
Provide materials to student's families about how to walk or bike with your kids.	School families	Local taxes	<b>School Dist., Nat'l SRTS, NCWRPC, WI Bike Fed</b>	Annually or as needed
Consider starting an additional bicycle training event.	Community	Local taxes	<b>School Dist., City</b>	Short term
Consider school field trips that integrate safe walking and biking practices into the curriculum.	Kate Goodrich	Local taxes	<b>School Dist.</b>	Short term
<b>Encouragement</b>				
Create a "Walk to School Week" every fall.	Communitywide	Current staff	<b>School Dist., Police, City</b>	Annually in fall
Review creating a walking/biking club.	Kate Goodrich	Current staff	<b>School Dist., NCWRPC</b>	Short term Ongoing
<b>Enforcement</b>				
Continue to provide safety patrol.	As needed around Kate Goodrich.	Local taxes	<b>City, School Dist.</b>	Annually
Continue maintaining school speed limit zones.	See <a href="#">Site Assessment</a> map.	Local taxes	<b>City</b>	Ongoing
<b>Evaluation</b>				
Conduct student tallies to see if walking and biking have increased.	Kate Goodrich	Current staff	<b>School Dist., NCWRPC</b>	After initial changes and as new modifications are
If walking or biking have not increased after all Engineering actions have occurred, then review various educational programming on "Resources" webpage and implement one or more of the resources.	Kate Goodrich	Current staff	<b>School Dist.</b>	After student tally information has been collected