

# Vilas County

## AQUATIC OCCURRENCES

### Animal

- Elktoe, *Alismidonta marginata*, 1996
- Caspey, *Pandion haliaetus*, 2007
- Bullfrog, *Rana catesbeiana*, 2006
- Mink Frog, *Rana septentrionalis*, 2006
- Bald Eagle, *Haliaeetus leucocephalus*, 2007
- Black Tern, *Chlidonias niger*, 1995
- Lake Darter, *Aeshna eremita*, 1994
- Water Shrew, *Sorex palustris*, 1946
- Wood Turtle, *Clemmys insculpta*, 1992
- Yellow Rail, *Coturnicops noveboracensis*, 1988
- Arctic Shrew, *Sorex arcticus*, 1947
- Lake Emerald, *Somatochlora cingulata*, 1994
- Least Darter, *Etheostoma microperca*, 1985
- Round Pigtoe, *Pleurobema sintoxia*, 1997
- Cyrano Darter, *Nasaeschna pentacantha*, 1994
- Ellin Skimmer, *Nannothemis bella*, 1966
- Spruce Grouse, *Falco pennis canadensis*, 2006
- Bog Fritillary, *Boloria eunomia*, 1993
- Mottled Darter, *Aeshna clepsydra*, 1994
- Pugnose Shiner, *Notropis anogenus*, 1985
- Longear Sunfish, *Lepomis megalotis*, 1993
- Subarctic Bluet, *Coenagrion interrogatum*, 1967
- American Bittern, *Botaurus lentiginosus*, 1993
- Banded Killifish, *Fundulus diaphanus*, 1985
- Boreal Chickadee, *Parus hudsonica*, 2008
- Citrine Forktail, *Ischnura hastata*, 1962
- Common Goldeneye, *Bucephala clangula*, 2006
- Greater Redhorse, *Moxostoma valenciennesi*, 1984
- Forcipate Emerald, *Somatochlora forcipata*, 1994
- Freija Fritillary, *Boloria freija*, 2004
- Frigga Fritillary, *Boloria frigga*, 1993
- Red-disked Alpine, *Erebia discoidalis*, 1968
- Le Conte's Sparrow, *Ammodramus leconteii*, 2006
- A Periodid Stonefly, *Isoperla richardsoni*, 1994
- American Black Duck, *Anas rubripes*, 1993
- Red-shouldered Hawk, *Buteo lineatus*, 1992
- West Virginia White, *Pieris virginensis*, 1990
- Four-toed Salamander, *Hemidactylum scutatum*, 2001
- Black-backed Woodpecker, *Picoides arcticus*, 2006
- A Predaceous Diving Beetle, *Agabus bicolor*, 2004
- A Giant Casemaker Caddisfly, *Banksiola dossuaria*, 1994
- Nelson's Sharp-tailed Sparrow, *Ammodramus nelsoni*, 1992
- Robust Dubiraphian Riffle Beetle, *Dubiraphia robusta*, 1994

### Plants

- Moor Rush, *Juncus stygius*, 1997
- Swamp-pink, *Aethusa bulbosa*, 2007
- Shore Sedge, *Carex lenticularis*, 1996
- Fairy Slipper, *Calypto bulbosa*, 1994
- Adder's-tongue, *Ophioglossum pusillum*, 1983
- Sheathed Sedge, *Carex vaginata*, 1993
- Prickly Hornwort, *Ceratophyllum echinatum*, 1996
- Vasey's Pondweed, *Potamogeton vaseyi*, 2002
- Yellow Screwstem, *Bartonia virginica*, 1928
- Assiniboine Sedge, *Carex assiniboensis*, 2000
- Downy Willow-herb, *Epilobium strictum*, 1995
- Marsh Willow-herb, *Epilobium palustre*, 1995
- Capitate Spikerush, *Eleocharis olivacea*, 1929
- Leafy White Orchid, *Platanthera dilatata*, 1995
- Northern Bog Sedge, *Carex gynocrates*, 1993
- Purple Bladderwort, *Utricularia purpurea*, 2002
- Robbins' Spikerush, *Eleocharis robbinsii*, 1996
- Alpine Cotton-grass, *Eriophorum alpinum*, 2007
- American Shore-grass, *Littorella americana*, 1995
- Showy Lady's-slipper, *Cypripedium reginae*, 1995
- Variiegated Horsetail, *Equisetum variegatum*, 1993
- Sparse-flowered Sedge, *Carex tenuiflora*, 2007
- Water-thread Pondweed, *Potamogeton diversifolius*, 1995
- Common Bog Arrow-grass, *Triplachne maritima*, 1997
- Northern Black Currant, *Ribes hudsonianum*, 2000
- Northeastern Bladderwort, *Utricularia resupinata*, 2001
- Ram's-head Lady's-slipper, *Cypripedium arietinum*, 1986
- Hidden-fruited Bladderwort, *Utricularia geminiscapa*, 1995
- Small Yellow Water Crowfoot, *Ranunculus gmelinii*, 1893

### Natural Communities

- Muskeg, Muskeg, 2007
- Open Bog, Open bog, 2005
- Poor Fen, Poor fen, 2001
- Spring Pond, Spring pond, 1991
- Inland Beach, Inland beach, 1998
- Lake-Spring, Lake-spring, 1997
- Alder Thicket, Alder thicket, 1982
- Emergent Marsh, Emergent marsh, 1981
- Hardwood Swamp, Hardwood swamp, 1993
- Boreal Rich Fen, Boreal rich fen, 1997
- Lake-Meromictic, Lake-meromictic, 1985
- Submergent Marsh, Submergent marsh, 1992
- Black Spruce Swamp, Black spruce swamp, 1998
- Patterned Peatland, Patterned peatland, 1988
- Northern Wet Forest, Northern wet forest, 2007
- Northern Sedge Meadow, Northern sedge meadow, 2007
- Southern Hardwood Swamp, Southern hardwood swamp, 1982
- Stream-Fast, Hard, Cold, Stream-fast, hard, cold, 1983
- Stream-Slow, Soft, Cold, Stream-slow, soft, cold, 1981
- Stream-Slow, Soft, Warm, Stream-slow, soft, warm, 1980
- Lake-Deep, Soft, Seepage, Lake-deep, soft, seepage, 2001
- Northern Wet-mesic Forest, Northern wet-mesic forest, 2007
- Emergent Marsh - Wild Rice, Emergent marsh - wild rice, 1994
- Lake-Shallow, Hard, Seepage, Lake-shallow, hard, seepage, 1980
- Lake-Shallow, Soft, Seepage, Lake-shallow, soft, seepage, 2005
- Lake-Shallow, Soft, Drainage, Lake-shallow, soft, drainage, 1994
- Springs and Spring Runs, Hard, Springs and spring runs, hard, 1981
- Lake-Deep, Very Soft, Seepage, Lake-deep, very soft, seepage, 1996

## TERRESTRIAL OCCURRENCES

### Animal

- Gray Wolf, *Canis lupus*, 2008
- Bird Rookery, Bird Rookery, 2000
- A Tiger Beetle, *Cicindela longilabris*, 2004
- Long-eared Owl, *Asio otus*, 2000
- American Marten, *Martes americana*, 2007
- Cape May Warbler, *Dendroica tigrina*, 2008
- Cerulean Warbler, *Dendroica cerulea*, 1996
- Northern Goshawk, *Accipiter gentilis*, 2008
- Swainson's Thrush, *Catharus ustulatus*, 1992
- Connecticut Warbler, *Oporornis agilis*, 2003
- Olive-sided Flycatcher, *Contopus cooperi*, 2008
- Black-throated Blue Warbler, *Dendroica caerulescens*, 2006

### Plants

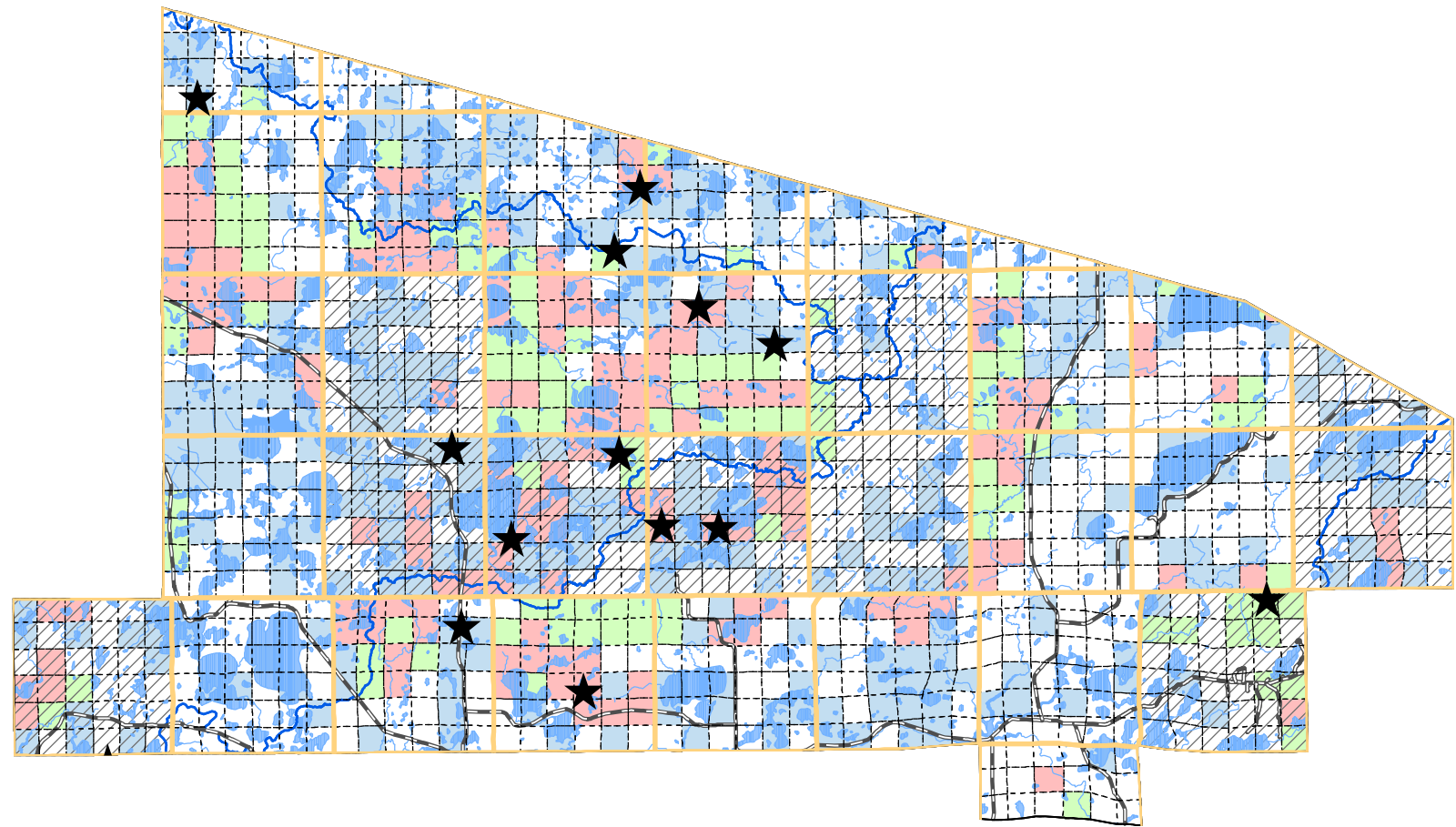
- Flodman Thistle, *Cirsium flodmanii*, 1958
- Purple Clematis, *Clematis occidentalis*, 1994
- Broad Beech Fern, *Phegopteris hexagonoptera*, 1962
- Chilean Sweet Cicely, *Osmorhiza chilensis*, 1993
- Large Roundleaf Orchid, *Platanthera orbiculata*, 1901
- Canada Mountain-ricegrass, *Oryzopsis canadensis*, 2001

### Natural Communities

- Boreal Forest, Boreal forest, 1993
- Bracken Grassland, Bracken grassland, 1992
- Northern Dry Forest, Northern dry forest, 1994
- Northern Mesic Forest, Northern mesic forest, 2001
- Northern Dry-mesic Forest, Northern dry-mesic forest, 2001

R4E R5E R6E R7E R8E R9E R10E R11E R12E

T44N  
T43N  
T42N  
T41N  
T40N



SPECIES and/or NATURAL COMMUNITY | Aquatic | Terrestrial | Both | Township Occurrences | Watershed Boundaries | State Natural Area



This map represents the known occurrences of rare species and natural communities that have been recorded in the Wisconsin Natural Heritage Inventory (NHI). Colored sections indicate the presence of one or more occurrences within that section. Hatched townships indicate one or more occurrences reported only at the township level. The date following the names above notes the most recent year the occurrence was recorded in the county.

Map generated using NHI data from: 10/01/2008  
Copyright 2003, WDNR-Bureau of Endangered Resources  
This map may not be reproduced without prior written permission.

