

# NCWRPC NEWS

A Newsletter of the North Central Wisconsin Regional Planning Commission (NCWRPC). Serving Adams, Forest, Juneau, Langlade, Lincoln, Marathon, Oneida, Portage, Vilas and Wood Counties for over 30 years.

Spring Issue, Number 26

2005

## Welcome

Since our last newsletter the NCWRPC has embarked on a Strategic Planning process for our organization. (See Commission Meeting Highlights.) Strategic planning is a disciplined approach to deciding what an organization is, what it does, and why it does it, all with a focus on the future. Following our last strategic planning effort in 1998, we made several changes, including refocusing the organization to become more entrepreneurial. I will keep you posted on this process as it proceeds. If you have any ideas or suggestions, let me know.

On the national level there is an initiative that could have an impact on all our units of government. It's called Strengthening America's Communities Initiative (SACI). This proposal is part of President Bush's budget and it would consolidate 18 different grant programs into one; however it cuts overall funding from \$5.5 billion to \$3.7 billion. The major programs utilized throughout our Region, such as the CDBG, Rural Development and EDA programs would be eliminated. There is a lot of opposition to this initiative already, so it will be a while until we know the outcome.

At the state level, Governor Doyle's recent budget maintains the comprehensive planning grant program at \$2 million per year. The 2005 grant awards were announced for this program. Five multi-jurisdictional county applications and one town & village application were approved. None of these were in our Region; the nearest was Shawano County. Remember, that all counties and local units of government that have zoning & subdivision ordinances need to meet the 2010 deadline.

As always, please feel free to contact me if you have any questions at (715) 849-5510, Extension 304, or [dlawrence@ncwrpc.org](mailto:dlawrence@ncwrpc.org).

Dennis Lawrence, AICP  
Executive Director

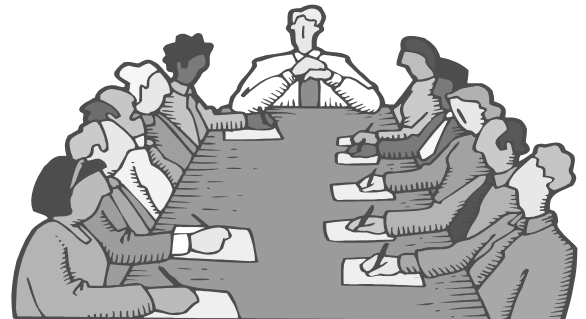
## Quarterly Quote:

"Quality is not an act. It's a habit."

Aristotle

## Commission Meeting Highlights

The entire February Meeting was devoted to the kick-off of an organizational Strategic Planning process. This effort will continue over most of 2005 with the end result being a five-year plan for the NCWRPC.



The meeting began with a review of the organization's history, which began in 1973 with the issuance of Executive Order 58. Some time was also

## Commission Meeting Highlights continued...

spent reviewing state statute 66.0309, the regional planning commission statute. Previous strategic planning efforts were highlighted, including the 1998 Peer 500 Plan. That plan focused on six basic areas covering Project Management, Program Development, Human Resources, Financial Management, General Management and Governance. Many recommendations were made, including focusing our services around the five basic areas of economic development, GIS, intergovernmental cooperation, land use and transportation. Most of these recommendations have been implemented.

Current budget and funding issues were also discussed. The 2005 Annual Budget is made up of three basic revenue sources: continuing grants (24 percent) local levy (30 percent) and local projects (46 percent). Over the last ten years there has been significant change in the funding makeup. Basically the local levy and project sources have reversed position. The levy has decreased from 46 percent, projects have increased from 30 percent, and continuing grants remain the same. This change is the result of a specific strategy to move away from the local levy as a funding source and move toward project funding. During this time, staff size has more than doubled from 4 to 9.

The meeting proceeded with the beginning discussion of strengths and weaknesses. One strength identified was the level of staff expertise, which includes four nationally certified planners (AICP), one nationally certified GIS professional (GISP) and one nationally certified economic development planner (EDFP), all in addition to four masters degrees in planning. No other planning organization in the Region, public or private, compares to the planning qualifications of the NCWRPC.

One weakness identified was the lack of wall-to-wall membership, especially as it relates to the ability to work together as a unified Region. The non-membership of Portage County and the partial

membership in Marathon and Wood Counties creates some unique challenges that need to be addressed.

The next several meetings will continue the discussion of organizational strengths and weaknesses, and the development of a Commissioner "job description," among other things.

## jake3 Website

Later this year the jake3 website will be unveiled. This acronym stands for Jobs Accelerating a Knowledge Economy for Education, Employees and Economic Development. This project is a Regional partnership with UWSP Extension, the North Central Wisconsin Workforce Development Board and the North Central Wisconsin Regional Planning Commission. The NCWRPC is coordinating the economic development component of this project.

The jake3 website is intended to be a comprehensive one stop source of information on our Region. By accessing the site, one can find three basic types of information:

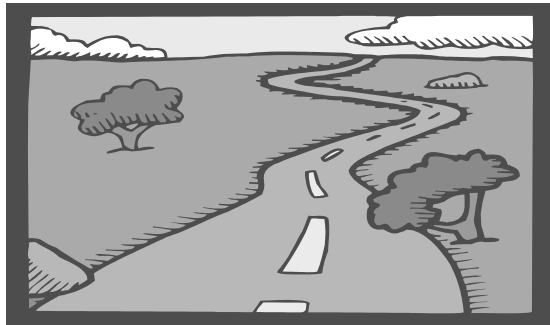
- Educational offerings by public institutions
- Employment services available
- Economic development resources and contact information

The intent of this site is not to duplicate any information, but rather link all the information already out there into one site. We ask that any economic development organization interested in being linked to jake3 contact us. The website is still in draft form, but it can be viewed at [www.jake3.org](http://www.jake3.org). Any feedback would be helpful, especially as it relates to the types of economic development information that could be posted.

If you have any questions contact Dennis Lawrence, AICP, at (715) 849-5410, Extension 304 or [dlawrence@ncwrpc.org](mailto:dlawrence@ncwrpc.org).

## Pavement Rating Assistance

It is time once again for local governments in Wisconsin to submit surface condition ratings for all local roads under their jurisdiction. State statute 86.302(2) requires that the ratings be submitted to the Wisconsin Department of Transportation every two years. In 2003, the NCWRPC submitted the mandated condition ratings for 26 communities. The next round of submissions will be due to WisDOT by December of this year.



The Pavement Surface Evaluation and Rating (PASER) system provides criteria for evaluating and scoring the physical condition of paved and unpaved road surfaces. The state now requires that every unit of government submit a surface condition rating for each segment of local road inventoried for mileage certification. This requirement is part of the new Wisconsin Information System for Local Roads (WISLR).

Commission Staff will be providing a variety of services to local units of government within the Region to meet their needs for pavement rating and submission to WisDOT. Most of these services will be provided free-of-charge to Commission members while non-members will be charged for assistance per our 2005-2006 fee schedule. See page 4 of this newsletter for our current schedule of pavement rating services.

If you think your community would like to utilize the services of the NCWRPC to help you with this pavement rating mandate, please contact Darryl Landeau, AICP, the Commission's Transportation Planner, at 715-849-5510, Extension 308, or email [dlandeau@ncwrpc.org](mailto:dlandeau@ncwrpc.org).

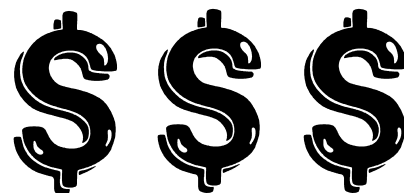
## Traffic Counting Services

The NCWRPC will again be offering traffic counting services to member units of government this summer. Last year, traffic counts were completed for Juneau County, the Town of Cassian in Oneida County, and the Town of Rolling in Langlade County. Our counter can provide basic traffic counts and average traffic statistics. The equipment can also provide vehicle classification statistics whether it is a car or a truck and even what type of truck. Traffic may also be broken down by time of day and direction. Speed statistics are also possible which may be of assistance in setting speed limits or identifying speeding trouble spots.

If your community is interested in doing some traffic counts or studying vehicle types or speeds, please contact the NCWRPC's Transportation Planner: Darryl Landeau, AICP, at 715-849-5510, Extension 308, or [dlandeau@ncwrpc.org](mailto:dlandeau@ncwrpc.org).

## Regional Revolving Loan Fund

The Regional Revolving Loan Fund (RRLF) is intended to provide gap financing to area businesses to promote job creation in the Region. Gap financing can be defined as the difference between what a private lender is willing to lend to a borrower and what is needed to complete a project. Typically, these funds are longer-term, and carry lower interest rates than traditional private financing. Revolving Loan Funds do not compete with banks, but complement them and other development programs in a total financial structure.



To apply for a RRLF loan please contact Craig Stahl, AICP, at 715-849-5510, Extension 311, or [cstahl@ncwrpc.org](mailto:cstahl@ncwrpc.org) for more information.

**NORTH CENTRAL WISCONSIN REGIONAL PLANNING COMMISSION  
(NCWRPC)**

**LOCAL ROAD IMPROVEMENT PROGRAM (LRIP)  
WISCONSIN INFORMATION SYSTEM FOR LOCAL ROADS (WISLR)  
PROGRAM SERVICES**

PROGRAM SERVICES <sup>1</sup>	2005 - 2006 FEE SCHEDULE	
	MEMBERS <sup>2</sup>	NON-MEMBERS
FULL LRIP PLAN REPORT	\$400	\$9,000 (\$19,000 <sup>3</sup> )
ROAD EVALUATION & RATING REPORT ONLY	NO CHARGE	\$7,000 (\$15,000 <sup>3</sup> )
PREPARATION OF LRIP PLAN REPORT FROM LOCAL RATING DATA	\$200	\$5,000 (\$11,000 <sup>3</sup> )
SUBMIT DATA FOR WISLR TO WISDOT <sup>4</sup>	NO CHARGE	NOT AVAILABLE
WISLR MAP PLOTTING AND DATA PRINTING <sup>4</sup>	MATERIALS AT COST	TIME (@ \$75/HOUR) AND MATERIALS
PASER/PASERWARE TRAINING PROGRAM	\$400	\$4,000
PASER/PASERWARE TECHNICAL ASSISTANCE ON-SITE	\$20/HOUR	\$75/HOUR
PASER/PASERWARE TECHNICAL ASSISTANCE TELEPHONE	NO CHARGE	NOT AVAILABLE

**NOTES:**

1. Services must be requested in writing by chief elected official of the jurisdiction. Scheduling of LRIP/WISLR services will be provided on a first come first serve basis subject to membership and staff availability!
2. "Members" include all units of government enrolled either independently or through a financially participating jurisdiction. Contact the NCWRPC office at 715/849-5510 if unsure of your membership status.
3. Rate for Marshfield, Stevens Point, Wausau, Wisconsin Rapids and the counties of Marathon, Portage, Wood and Vilas.
4. The local unit must authorize the NCWRPC to access its official WisDOT data over the Internet.

## **USDA Community Facilities Program**

Does your community need help financing a community facility? If so, USDA's Wisconsin Rural Development Community Facilities Loan Program might be worth looking into. The program can be used for: purchasing, developing, and improving real estate; buying equipment; interest expenses for interim construction financing; initial operating expenses; and fees and costs incurred (legal, engineering, architectural, fiscal advisory, recording, environmental, impact analysis, and archeological surveys). Examples of community facilities include: hospitals, clinics, health care facilities, police stations, fire stations/equipment, schools, nursing homes, assisted living centers, libraries, youth centers, job centers, community centers, and child care centers.

The Rural Housing Service of USDA Rural Development works with local lenders including banks, savings and loan associations, credit unions, and mortgage companies, to offer loan guarantees to help build essential community facilities. To qualify, you must be located in a rural area, city, or village of not more than 20,000 people. Applications are accepted year-round and are evaluated based upon median household income levels and a competitive process. Below is a list of projects in our Region that have been assisted by this program:

Town of Lynne - Fire Station  
Town of Land O' Lakes – Library  
Lac du Flambeau Band - Wellness Center  
Arpin Volunteer Fire Department - Jaws of Life  
CAP Services - Child Care Center  
Northwoods Child Care Center - Child Care Center

For more information contact Craig Stahl, AICP, at (715) 849-5510, Extension 311, or [cstahl@ncwrpc.org](mailto:cstahl@ncwrpc.org), or visit the USDA-RD website at: [www.rurdev.usda.gov/wi](http://www.rurdev.usda.gov/wi).

## **Technology Zone Award Made**

North Central Wisconsin Regional Planning Commission provides staffing assistance to the Technology Zone Board, which reviews applications

submitted for the tax credit. The Board is made up of a representative from each county in the region. The tax credits are part of a statewide program to provide economic incentives to technology-based businesses in certain industry clusters thereby promoting economic development. So far, Marathon, Portage, Vilas, and Wood counties have benefited from this program.

Crystal Finishing Systems in Schofield was recently awarded \$200,000 in tax credits. Crystal Finishing Systems has expanded its operations with the development of a new painting application for its marine products. The company will use the tax credits to facilitate the creation of an additional 150 jobs over the next 12 to 16 months. There are still over \$3 million in tax credits available to the North Central Region. For more information, contact Craig Stahl, AICP, at (715) 849-5510, Extension 311, or visit <http://ncwrpc.org/tech/TechZone.htm>.

## **Radio Grant Update**

Earlier this year, Florence, Forest, Langlade, Lincoln, Marathon, Marinette, Menominee, Oconto, Oneida, Portage, Price, Shawano, Taylor, Vilas, Waupaca and Wood Counties were awarded \$640,000 to complete a study of existing radio and mobile data systems and make recommendations for future systems design. This effort is called North East Wisconsin Public Safety COMMunications or NEWCOM. This project is on a very fast timeline and should be completed by June. The firm of CTA Communications from Virginia was selected by the counties to conduct the study. The firm will be in the state several times over the next few months collecting information and interviewing area public safety agencies.

The NCWRPC coordinated this Regional effort and prepared the application with the assistance of many area public safety agencies. Now that the project is underway we are assisting the consultant in setting up meetings and collecting some of the information.

For more information contact Andy Faust, GISP, at (715) 849-5519, Ext. 305, or [afaust@ncwrpc.org](mailto:afaust@ncwrpc.org).

## NCWRPC Receives GIS Awards

Two NCWRPC staff persons recently received awards at the Wisconsin Land Information Association (WLIA) Annual Conference. Matt Guptail was awarded first place in the Base Map category with an entry of the Adams County “Petenwell and Castle Rock Parks”. Andy Faust was awarded 2<sup>nd</sup> place in the small format category with the Town of Rolling “Poster Plan”.

The WLIA is a state-wide organization representing GIS professionals working to develop, maintain, and apply a network of statewide land information systems. WLIA membership includes staff and elected officials from all levels of government, as well as academics, consultants and other private sector users of GIS.

Congratulations Matt and Andy!

## NCWRPC Commissioners

**Adams County:**  
Wilbur Fritz  
Donald Krahn  
Herbert Rieckmann

**Forest County:**  
Erhard Huettl  
Donald Kline  
Paul Millan

**Juneau County:**  
Robert Hayward  
Helmi Mehus  
Vacant

**Langlade County:**  
George Bornemann  
Robert Curran  
Frank Trimmel

**Lincoln County:**  
Thomas Rick  
E. Richard Simon  
Douglas Williams

**Marathon County:**  
Virginia Heinemann  
Brad Karger  
Bettye Nall

**Oneida County:**  
Beverly Long  
Wilbur Petroskey  
Thomas Rudolph

**Wood County:**  
Fred Camacho  
Maurice Mathews  
Vacant

## NCWRPC News Credits

LAYOUT: Bernie Lewis

CONTRIBUTOR: Darryl Landeau, Dennis Lawrence, and Craig Stahl

PRSRRT STD  
US POSTAGE  
PAID  
PERMIT NO. 150  
WAUSAU, WI

North Central Wisconsin  
Regional Planning Commission  
210 McClellan St. Suite 210  
Wausau, WI 54403