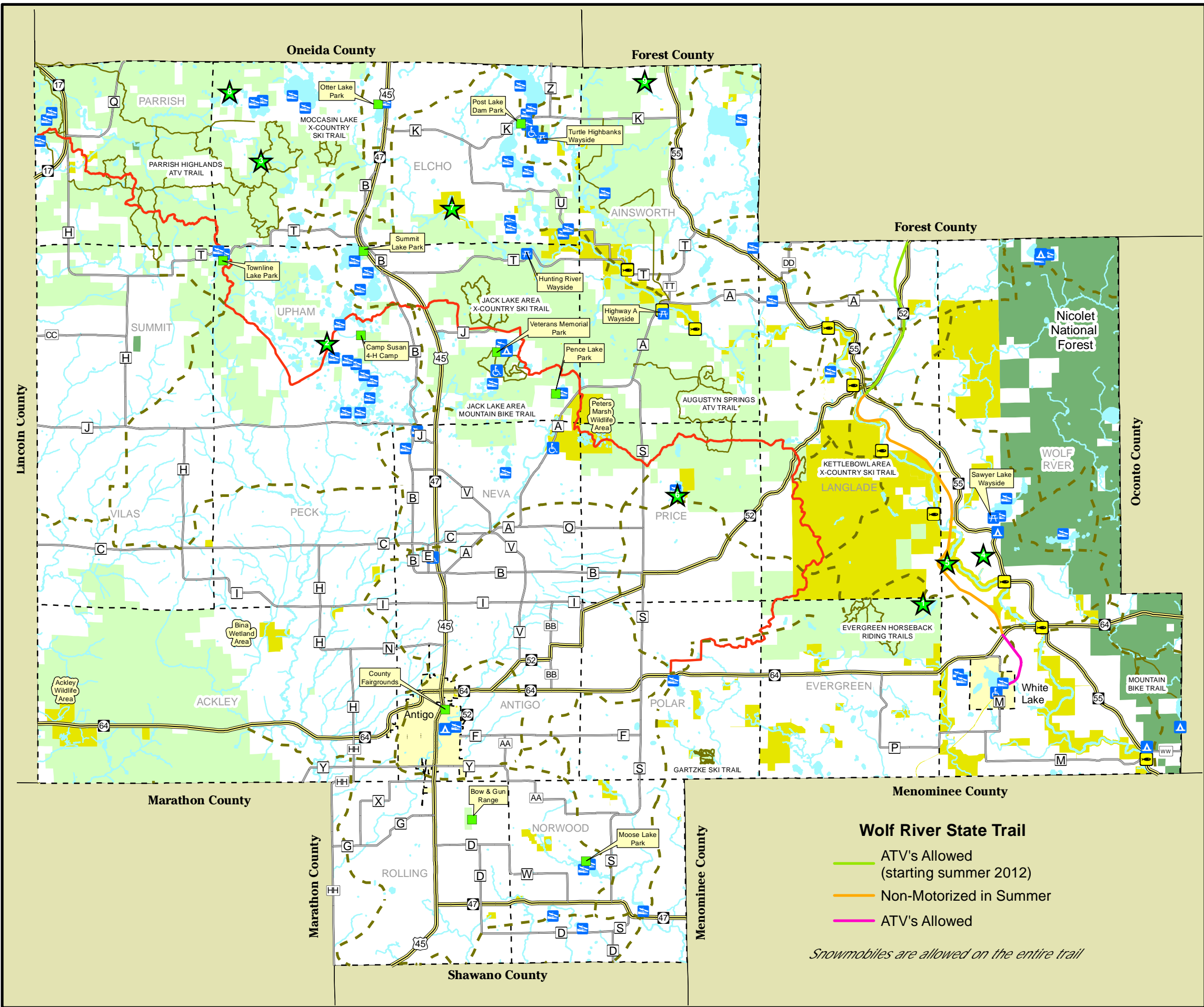


Map 3
Outdoor
Recreation

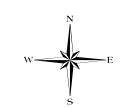
Langlade County, Wisconsin



- - - - Town Boundary
- == US & State Highways
- County Highways
- Ice Age Trail
- - - - Snowmobile Trails
- Trails
- Water
- ♿ Handicap Fishing Access
- ⚓ County Waysides
- ⛺ Campgrounds
- 🚤 Boat Launch
- 🐟 Trout Stream Access
- 📦 County Facilities
- 🟡 State Land
- 🟢 Federal Land
- 🟠 County Lands
- ★ State Natural Areas

- | | |
|-----------------------------------|-------------------------|
| 1. Flora Spring Pond | 6. Lawrence Lake |
| 2. Bogus Swamp | 7. Hunting River Alders |
| 3. Monito Lake | 8. Kelly Lnn Bog |
| 4. Bear Caves | 9. Swamp Creek Fen |
| 5. Oxbow Rapids, Upper Wolf River | |

This map is neither a legally recorded map nor a survey and is not intended to be used as one. This drawing is a compilation of records, information and data used for reference purposes only. NCWRPC is not responsible for any inaccuracies herein contained.



Wolf River State Trail

- ATV's Allowed (starting summer 2012)
- Non-Motorized in Summer
- ATV's Allowed

Snowmobiles are allowed on the entire trail

North Central Wisconsin Regional Planning Commission
 210 McClellan St., Suite 210, Wausau, WI 54403
 715-849-5510 - staff@ncwrpc.org - www.ncwrpc.org