

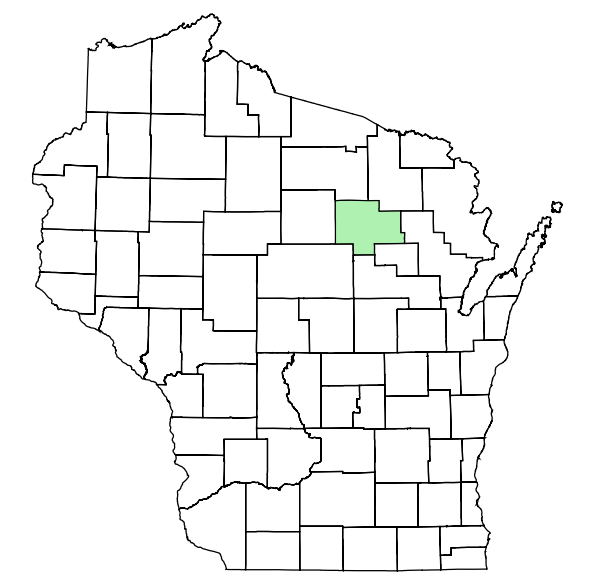
Town of Polar

Future Land Use Plan

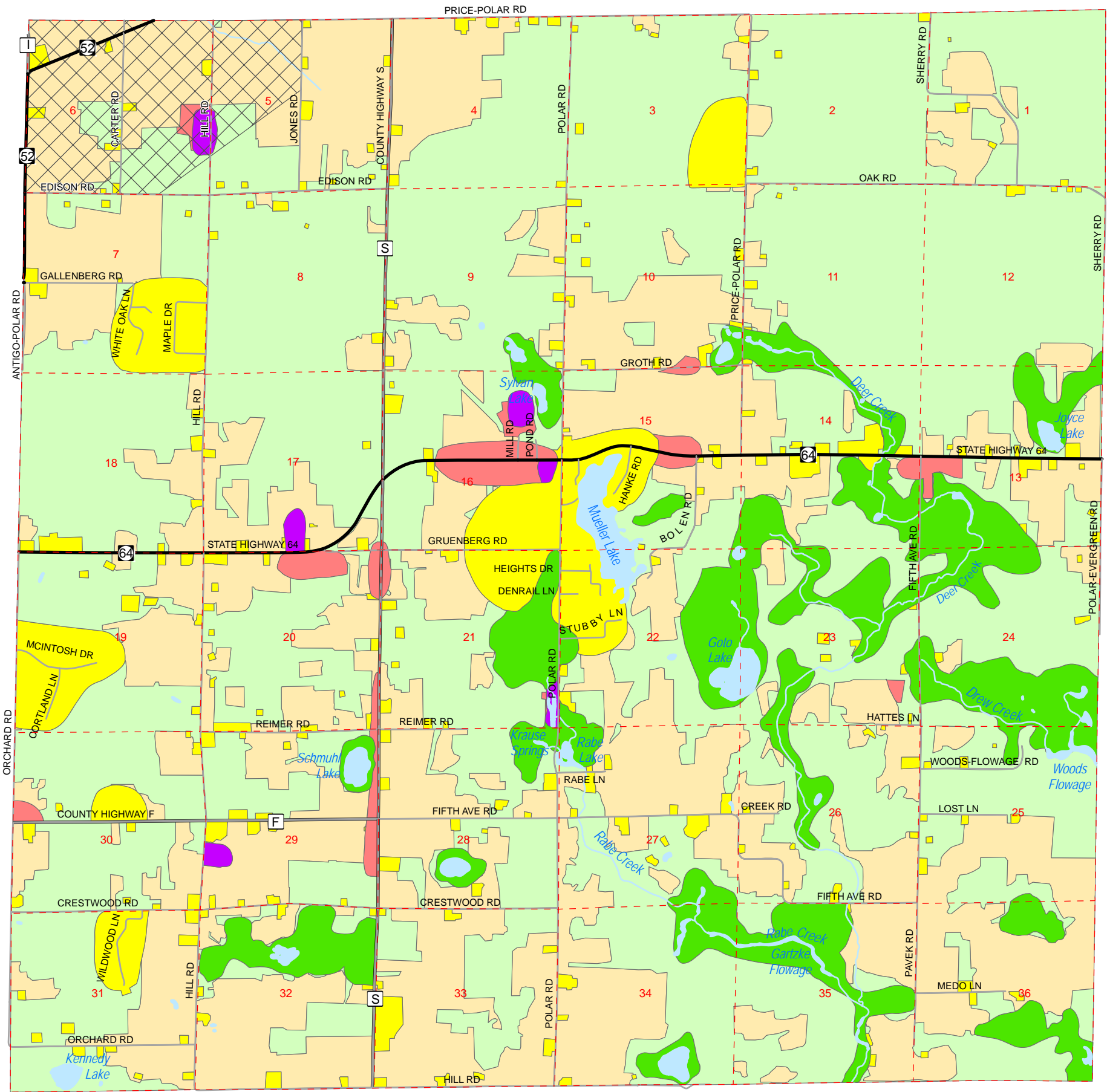
(Over Layed On Existing Land Use)

Langlade County, Wisconsin

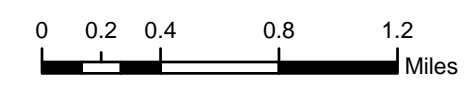
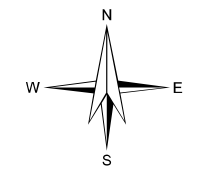
DRAFT



PARRISH	ELCHO			AINSWORTH	
SUMMIT	UPHAM			LANGLADE	
VILAS	PECK	NEVA	PRICE		WOLF RVER
ACKLEY	ANTIGO	POLAR	EVERGREEN	White Lake	
	ROLLING	NORWOOD			



- Section Lines
- US & State Highways
- County Highways
- Local Roads
- Private / Other
- CAFO Area
- Water
- Agriculture
- Commercial
- Industrial
- Preservation & Open Space
- Residential
- Woodlands



This map is neither a legally recorded map nor a survey and is not intended to be used as one. This drawing is a compilation of records, information and data used for reference purposes only. NCWRPC is not responsible for any inaccuracies herein contained.

 **North Central Wisconsin Regional Planning Commission**

210 McClellan St., Suite 210, Wausau, WI 54403
715-849-5510 - staff@ncwrpc.org - www.ncwrpc.org