

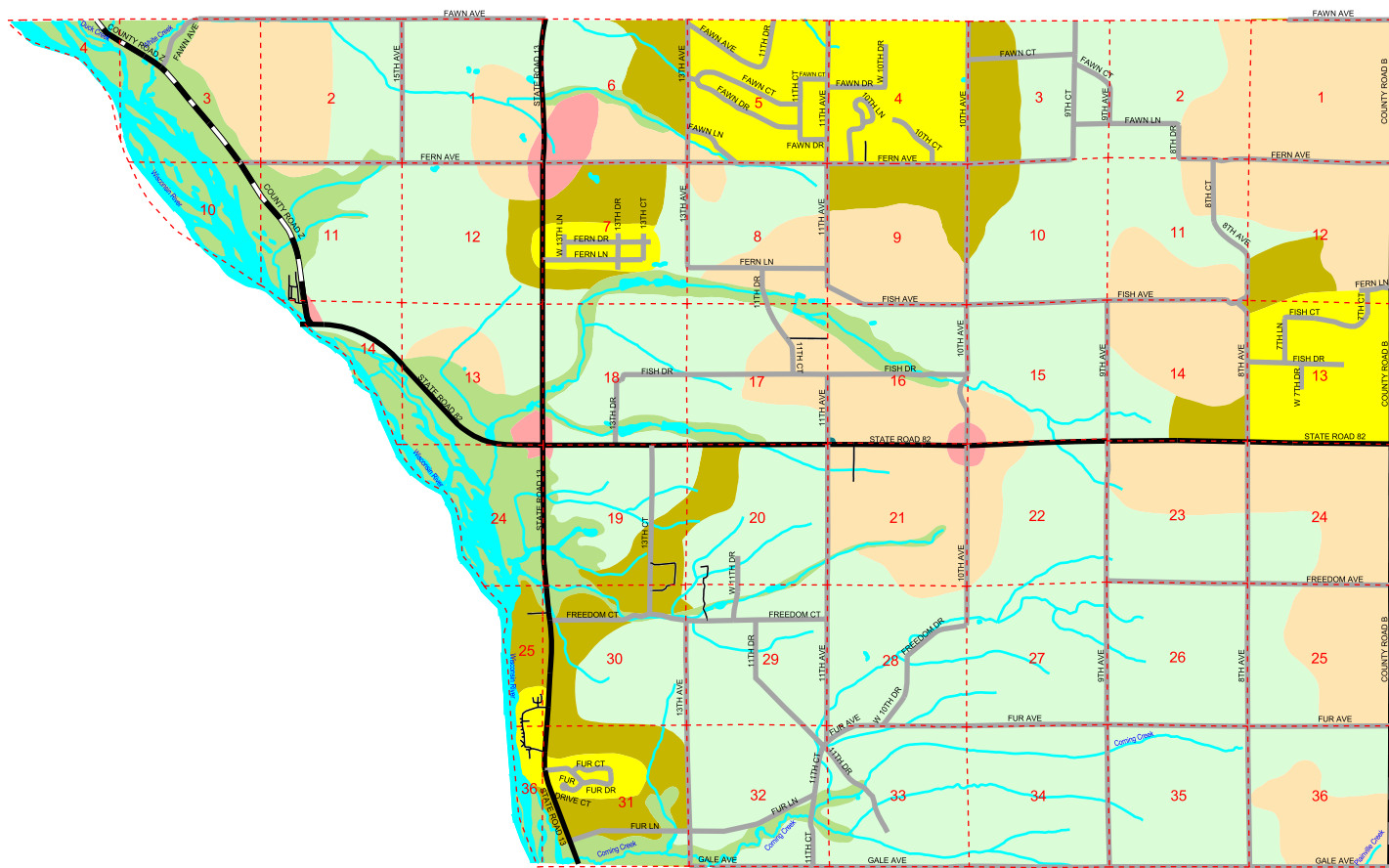
- - - Section Lines
- US / State Highways
- County Highways
- Local Roads
- Private Roads
- Railroads
- Water
- Residential
- Rural Residential
- Commercial
- Industrial
- Governmental / Public / Institutional
- Agricultural Areas
- Forestry Areas
- Transportation Corridors
- Preservation & Open Space

Map 11

Town of Springville

Future Land Use Plan

Adams County, Wisconsin



0 0.6 1.2 1.8 Miles

October 2005

This map is neither a legally recorded map nor a survey and is not intended to be used as one. This drawing is a compilation of records, information and data used for reference purposes only. NCWRPC is not responsible for any inaccuracies herein contained.



Prepared By:
**North Central
 Wisconsin Regional
 Planning Commission**

210 McClellan Street, Suite 210, Wausau, Wisconsin 54403
 (715) 849-5510 www.ncwrpc.org